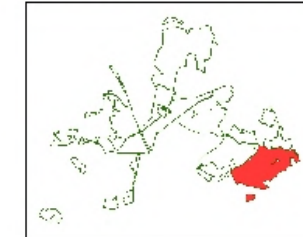


The proposed clearfell programme will be kept under review and will be reactive to changes, the timings of which may be adjusted due to changes in tree health.

When clearfell operations take place any character trees within the stands or along boundaries will be retained where they will remain windfirm and become part of the next rotation.

The riparian valley will be managed by CCF and the woodland will be opened up around the water courses and create a more open woodland structure.

## Central Forest District



### Felling Period

- Roads & Rides
- Open Ground
- ▨ 2013- 2016
- ▨ 2017 - 2021
- ▨ 2022 - 2026
- ▨ 2027 - 2031
- ▨ 2032 - 2036
- ▨ 2037 - 2041
- ▨ 2042 - 2046
- ▨ 2047 - 2051
- ▨ 2052 - 2056
- ▨ 2057 - 2061
- ▨ 2062 - 2099
- ▨ Continuous Cover System
- ▨ Biological & Natural Reserves
- ▨ Management Area

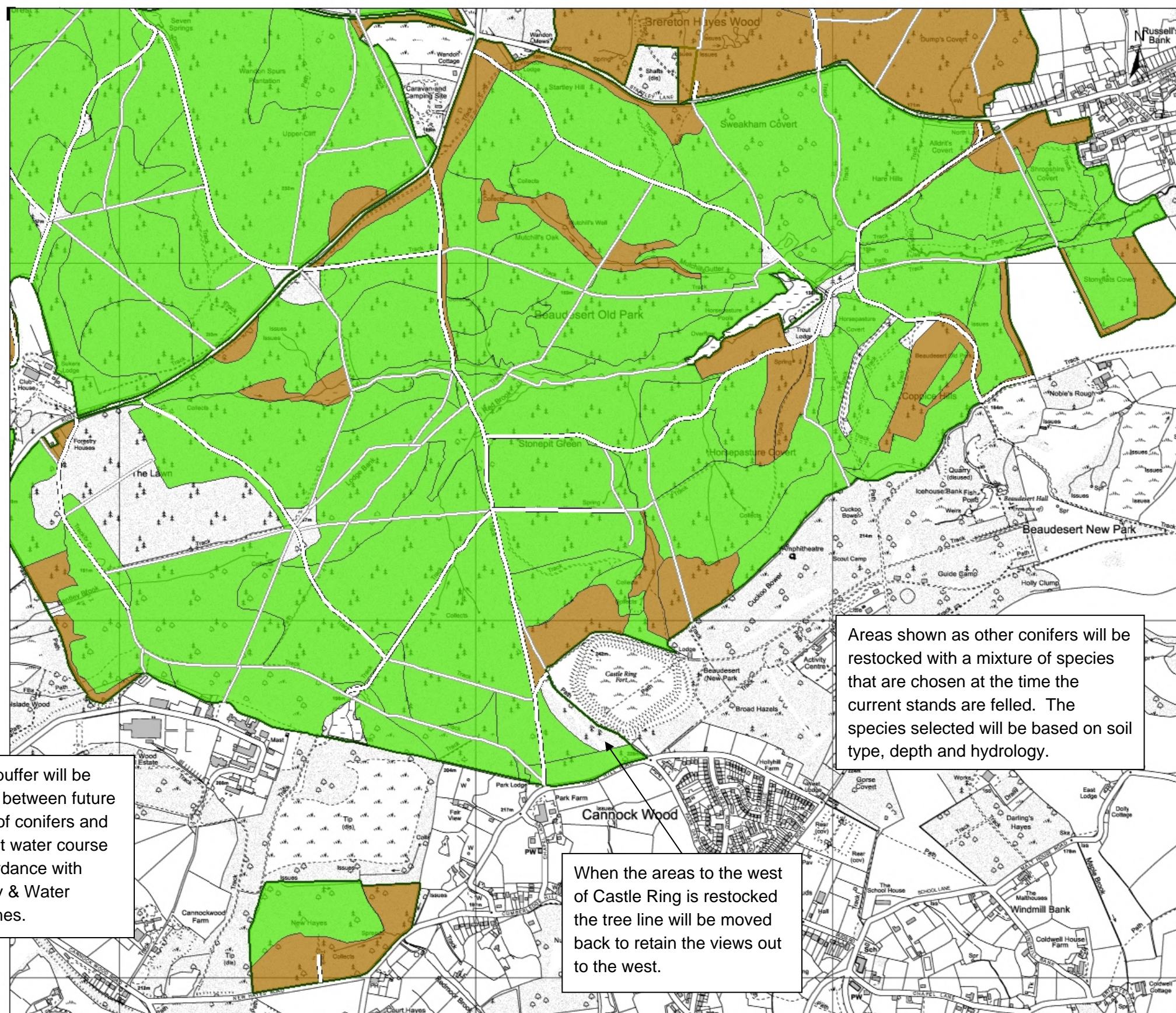


**Forestry Commission**  
England

1:10,000  
scale at A3



This map is based upon Ordnance Survey data available with the permission of Ordnance Survey on behalf of the Controller of Her Majesty's Stationery Office. © Crown Copyright. Unauthorised reproduction in any form is prohibited. Forestry Commission 1/0002/448

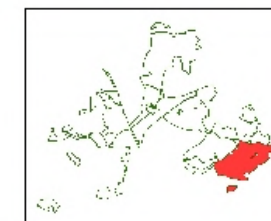


A 10m buffer will be created between future stands of conifers and adjacent water course in accordance with Forestry & Water Guidelines.






Areas shown as other conifers will be restocked with a mixture of species that are chosen at the time the current stands are felled. The species selected will be based on soil type, depth and hydrology.

When the areas to the west of Castle Ring is restocked the tree line will be moved back to retain the views out to the west.

## Central Forest District



## Intended Land Use

-  Roads & Rides
-  Open space
-  Conifers
-  Broadleaves
-  Heathlands



**1:10,000**  
scale at A3



This map is based upon Ordnance Survey data available with the permission of Ordnance Survey on behalf of the Controller of Her Majesty's Stationery Office. It is Crown Copyright. Reproduction in any form without the permission of the Controller of Her Majesty's Stationery Office is prohibited. Forestry Commission 1/0002/448