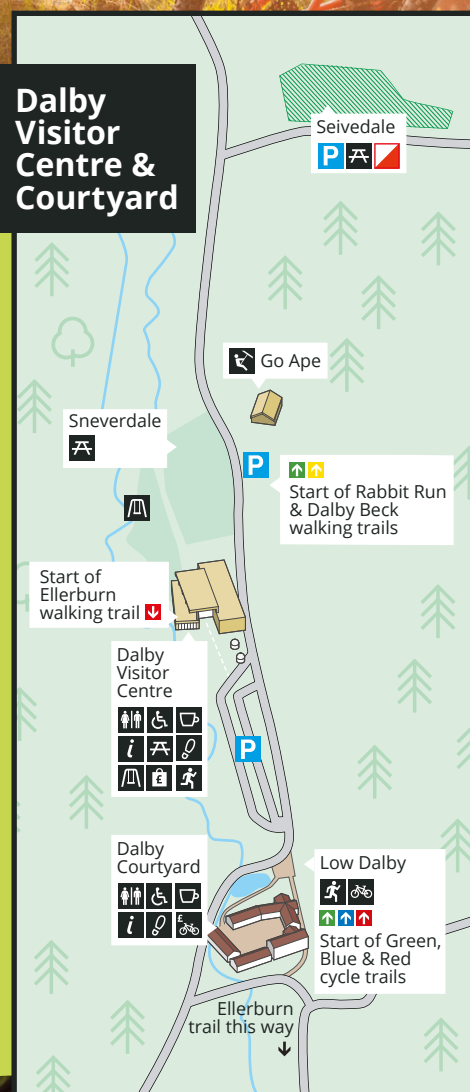


The Great Yorkshire Forest

Dalby Visitor Centre & Courtyard

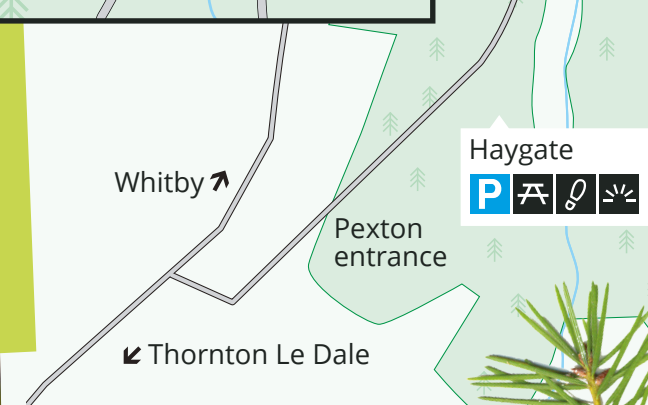


Volunteering

Love Dalby? You can get involved! There are opportunities in visitor services, bike trail maintenance and with the Friends of Dalby Forest volunteers. Visit forestryengland.uk/volunteer-dalby for more information.

Dog walking

Dogs with responsible owners are welcome in the forest, but please be respectful and do not allow dogs to foul anywhere on site. Please take dog poo and any litter away with you. Pop into the visitor centre for goodies for your pooch!



Stargazing at Dalby

Dalby Forest is a fantastic spot to see the stars, planets, nebulae and galaxies!

Discover the mysteries of the night sky with Dalby's partner astronomical organisation and find out why Dalby was awarded the Milky Way Class by Dark Sky Discovery.

For more information, visit forestryengland.uk/Dalby-forest

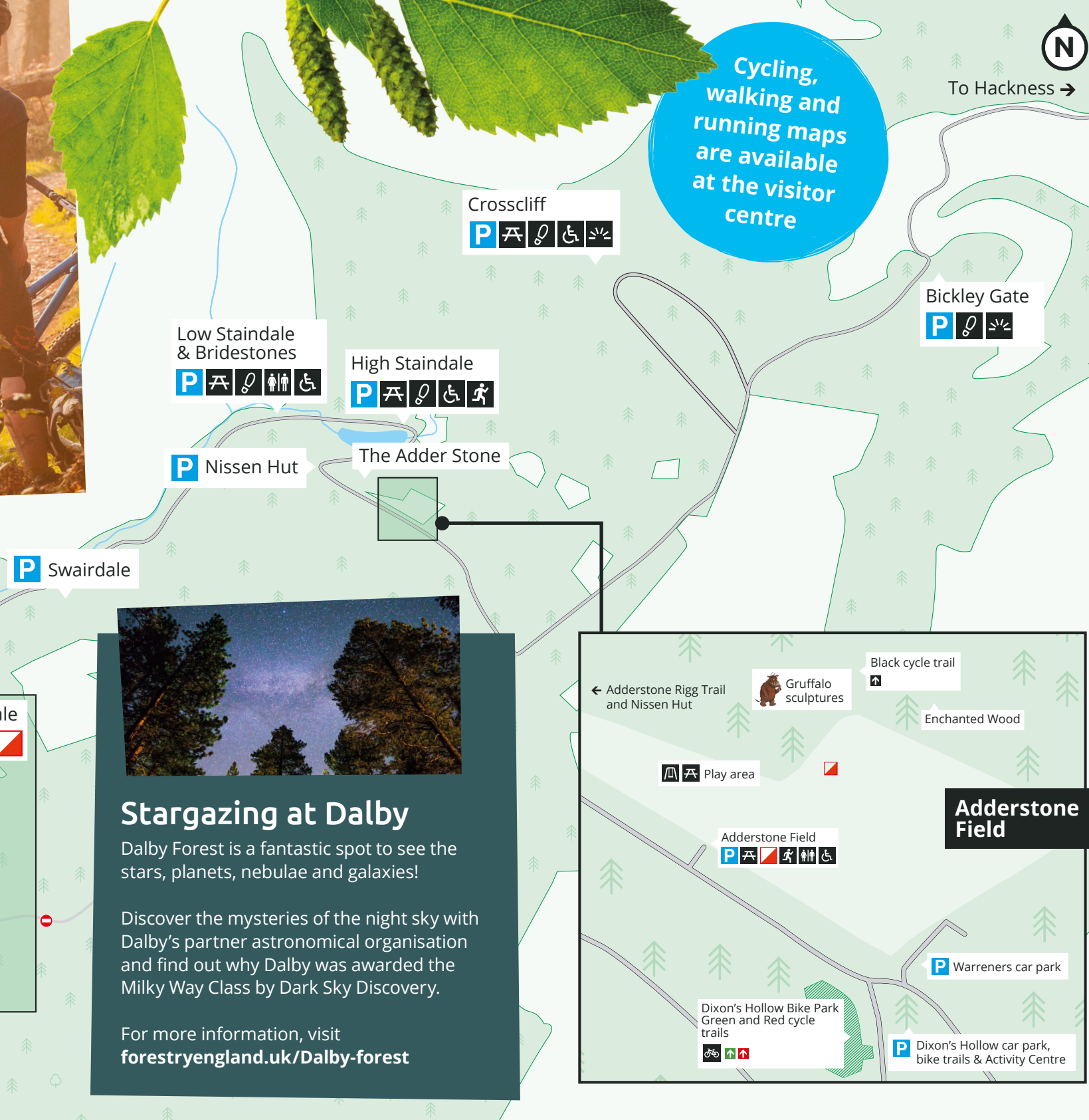


Dalby Forest Cycle Hub

Life's a beautiful ride at Dalby Forest Cycle Hub. Whether you're looking to buy a world-beating bike or you want an awesome hire for the day, our team of bike enthusiasts have got you covered. With a selection of MTB bikes, e-bikes, bikes for little legs and their new range of accessible recumbent bikes, there's something for everyone. You can even power-wash your bike before you head home. Enjoy a discount for members.

For more information, visit dalbyforestcyclehub.co.uk

Cycling, walking and running maps are available at the visitor centre



Emergency info

Name of key location:
Dalby Forest
YO18 7LT

In case of an emergency call 999 or 112. Inform Forestry England as soon as you can. T: 01751 460295

Hospital with A&E unit:
Scarborough Hospital
T: 01723 368111

Forest code

- Guard against all risks of fire.
- Protect and respect wildlife, plants and trees.
- Keep dogs under control and clean up after them.
- Take your litter home.
- Make no unnecessary noise.
- Take only memories away.

Key

- Toilets
- Parking
- Cafe
- Play area
- Picnic areas
- Viewpoint
- All-ability access
- Shop
- Walking
- Cycle hire & shop
- Cycling
- Running trails
- Orienteering

0 500m 1 km

Working forest

Dalby Forest is a working forest. All users should look out for vehicles, timber lorries and other machinery. Please respect all warning signs. The forest also provides a much needed recreation and education resource and is a haven for wildlife including rare birds and plants.

Always consider other forest users, especially walkers and horse riders.