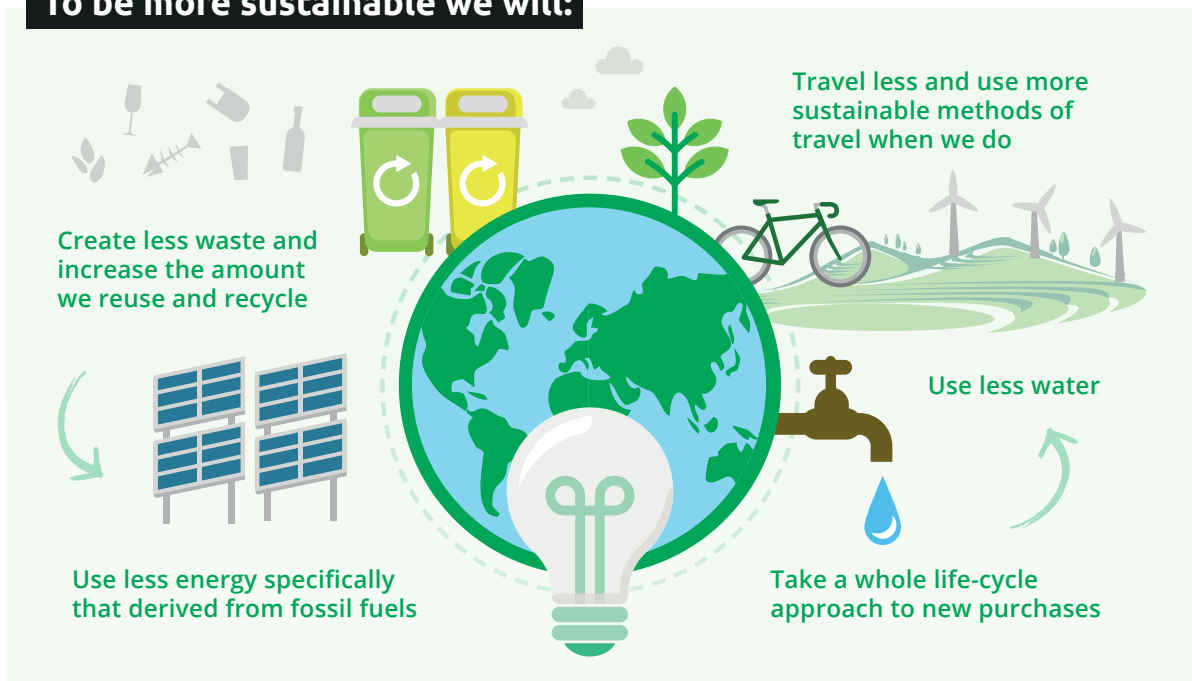


# We are Forestry England

We look after more land and more trees than any other organisation in the country, shaping landscapes for people, wildlife and timber.

We manage the nation's forests. Reducing our environmental impact, and continually improving our environmental performance, is essential to our business. We will continue to do this and we will encourage visitors, suppliers and others to do the same.

## To be more sustainable we will:



- 🕒 We maintain an environmental management system (EMS) which will help us deliver and measure our progress against these goals. It will also ensure we prevent pollution, protect the environment and fulfil our compliance obligations and continually improve our business systems and our environmental performance.
- 🕒 We will share this statement and information about our environmental performance with our stakeholders and work proactively with our staff across the business to further enhance our performance.
- 🕒 We work to recognised sustainability standards: Our woodland management is independently certified to the UK Woodland Assurance Standard (UKWAS). All other activities are managed through our environmental management system (EMS) which is designed to ISO 14001-2015 standards.

Signed:



**Mike Seddon**  
Chief Executive Forestry England