

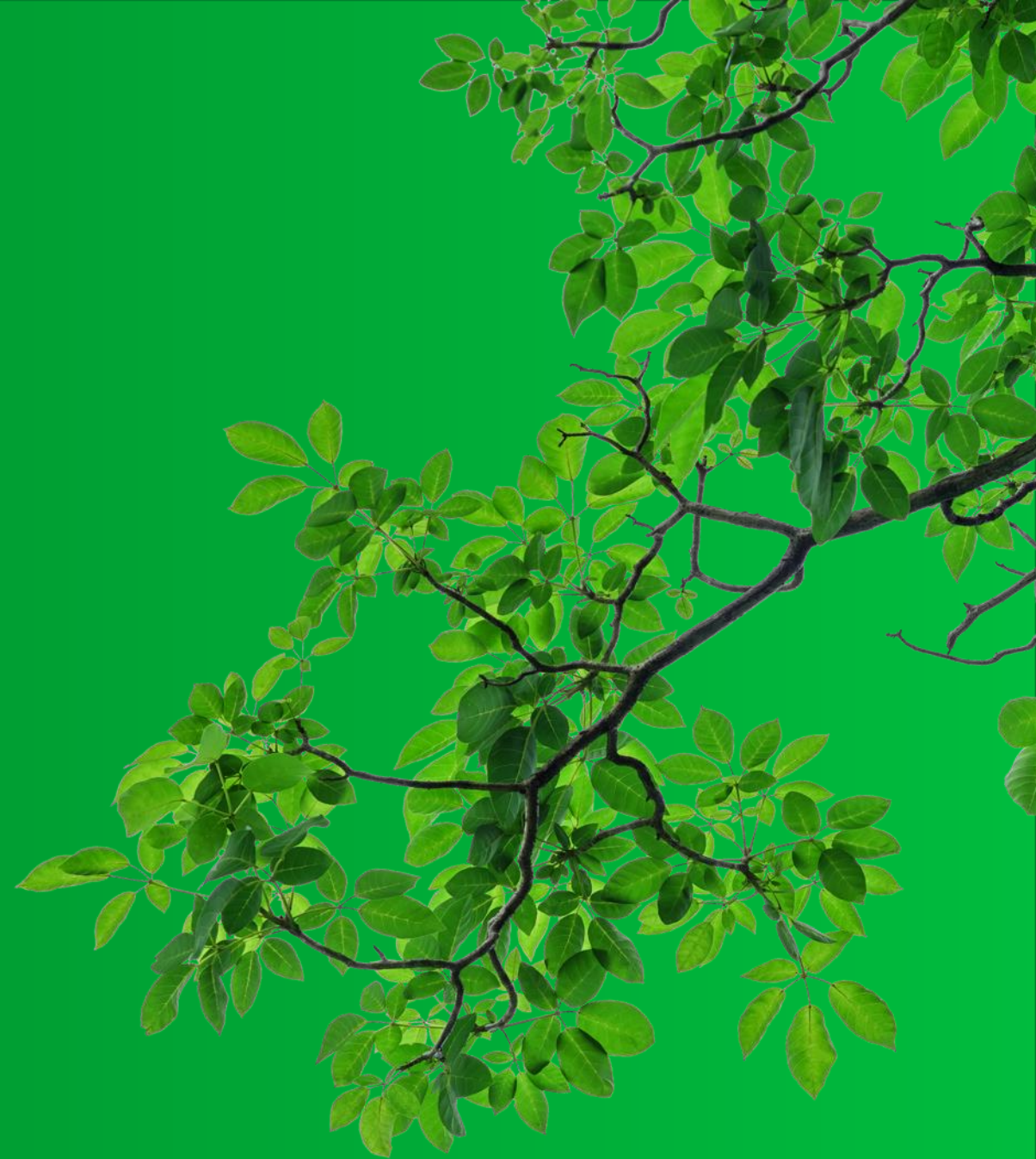


# HELLO

Our Shared Forest – Focus Group

# Contents

- What is Our Shared Forest?
- What we've done so far
- Feedback from workshops
- Our Shared Forest vision statement
- What happens next?



# What is 'Our Shared Forest' and what are we seeking to achieve?

- 'Our Shared Forest' is a project to reshape, to redirect the forest's land management – to set a new direction – for the public forest estate here in the Dean.
- An agreed, understood, supported direction from which the Forestry Commission will distil the more detailed Forest Plans.



# Foresters' Forest

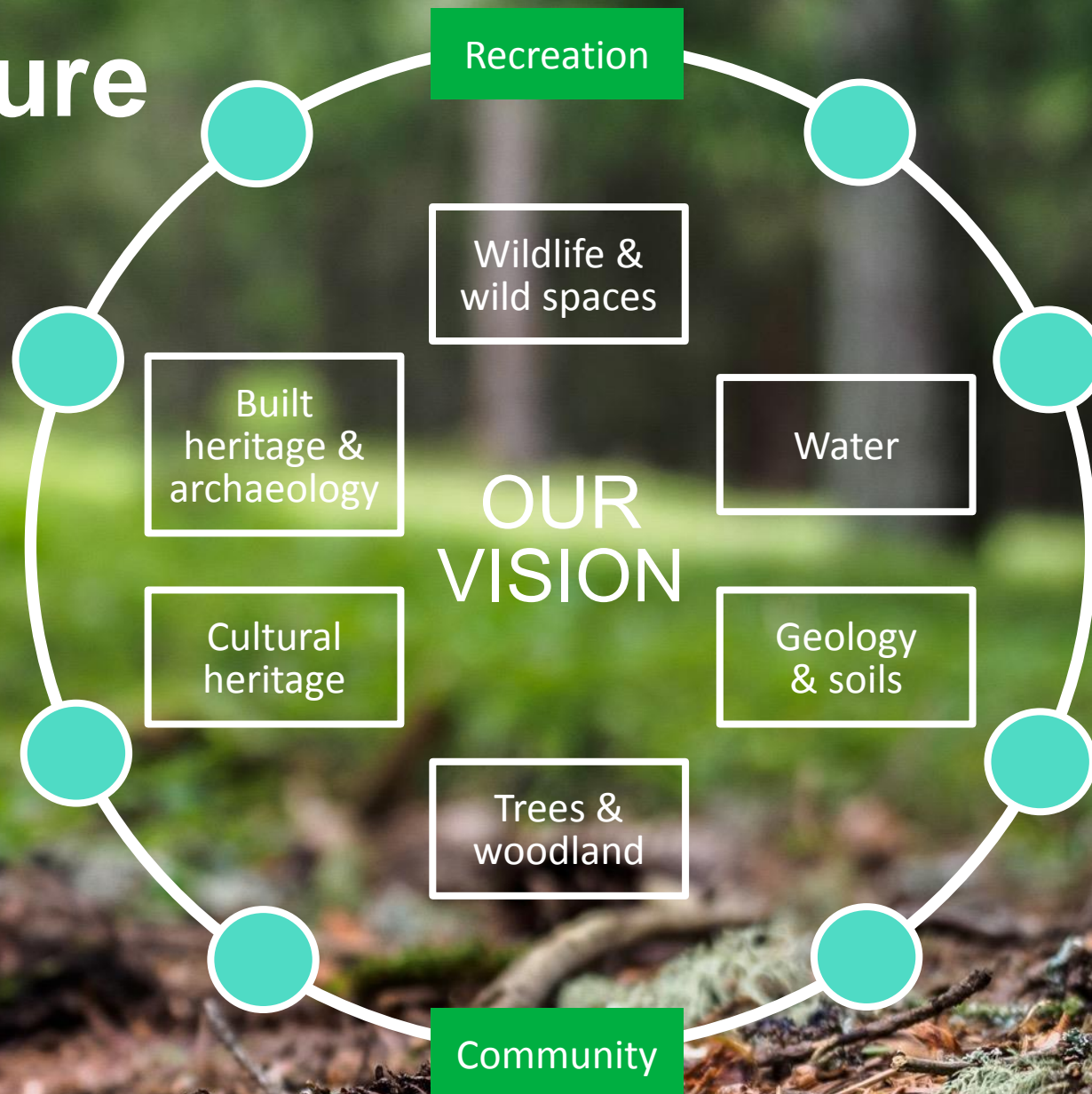
- Foresters' Forest is our community led landscape heritage programme.
- Its scope is far wider than the land managed by the Forestry Commission and goes well beyond land management.
- Our Shared Forest will take the learning from Foresters' Forest to shape our future land management.



**FORESTERS'  
FOREST**



# Plan structure



# Our vision

- What do we want our Forest to look like in 100 years?
- What do we value now that we want to maintain or enhance?
- What don't we like, what do we want to have changed in the future?

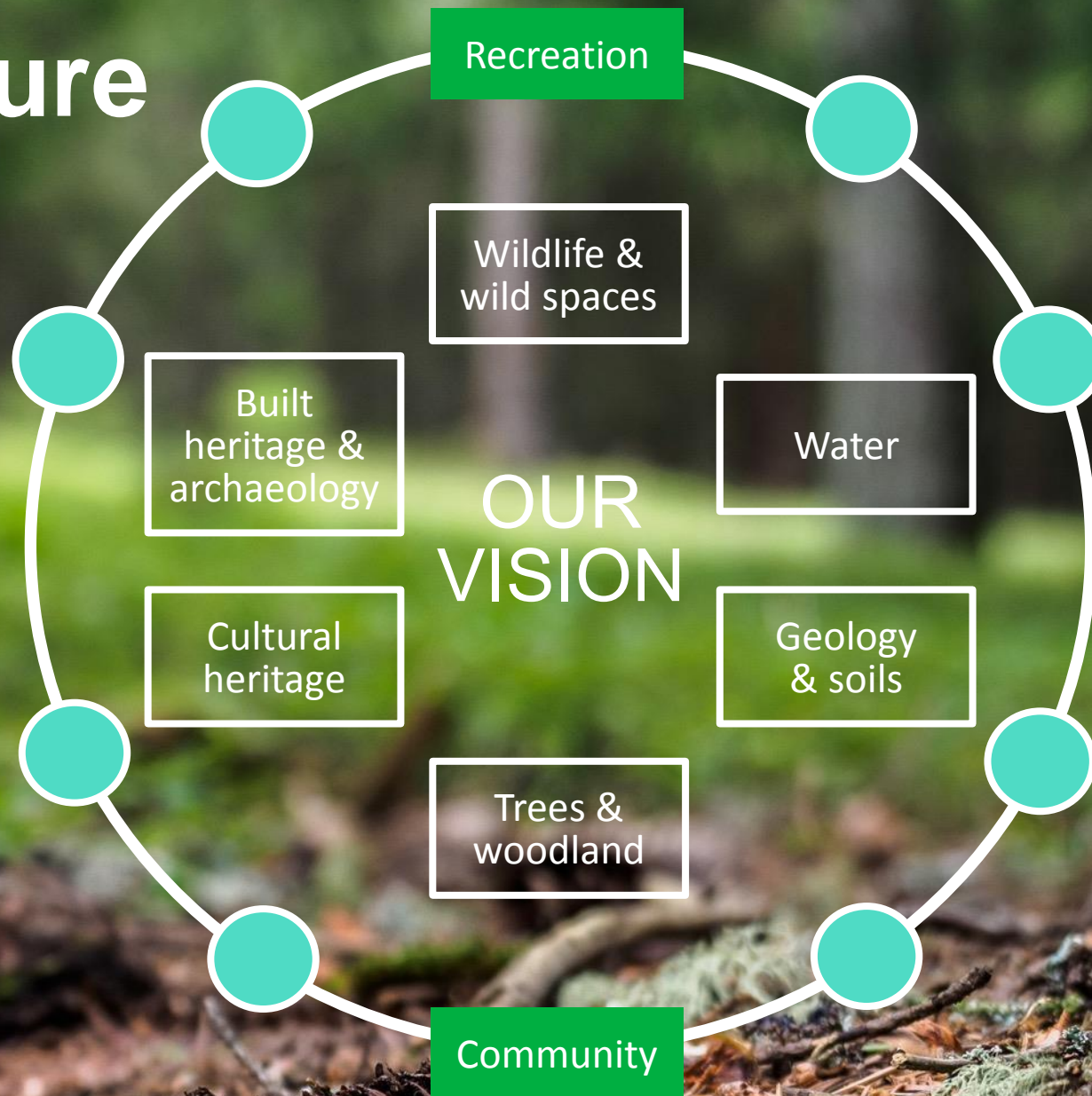


# Principles of management:

- What have we got now?
- Where do we want to get to?
- What mechanisms / systems of land management will we employ to make that change?



# Plan structure





# What we've done so far: Workshops

## Objectives:

Start to gather the info, opinion and insight from land management and forestry staff, delivery partners and stakeholders to build the land management plans for each of the key themes.



## Structure:

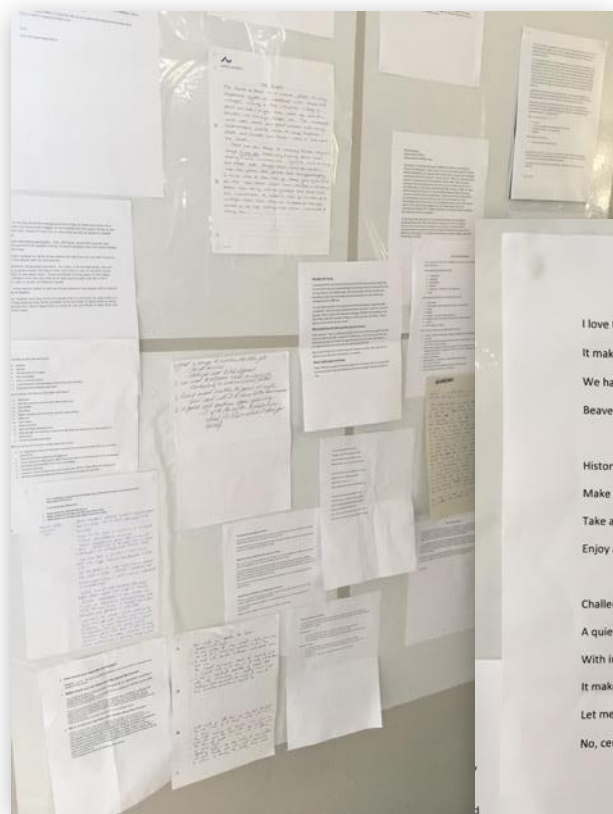
### Guest speakers:

- Climate change: Why we need to change, Mark Broadmeadow
- Resilience: How we manage the change, Jonathan Spencer
- Natural processes: How we can harness them, Andrew Stringer

### Open discussion and interactive exercises:

- Park bench exercise
- Your future vision of the Forest
- What should we stop doing / continue doing / create?

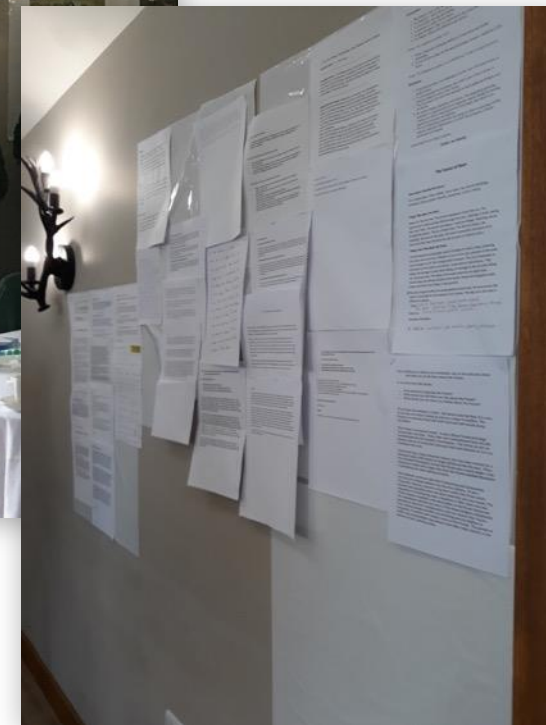
# Park bench exercise



I love the Dean with all its quirks,  
It makes it a truly special place to work.  
We have mighty oak at the forest's core,  
Beavers, sheep, deer and of course the boar!

History, heritage and a strong local community,  
Make the forest a unique place to be.  
Take a stroll, a ride or run,  
Enjoy a healthy lifestyle whilst having some fun.

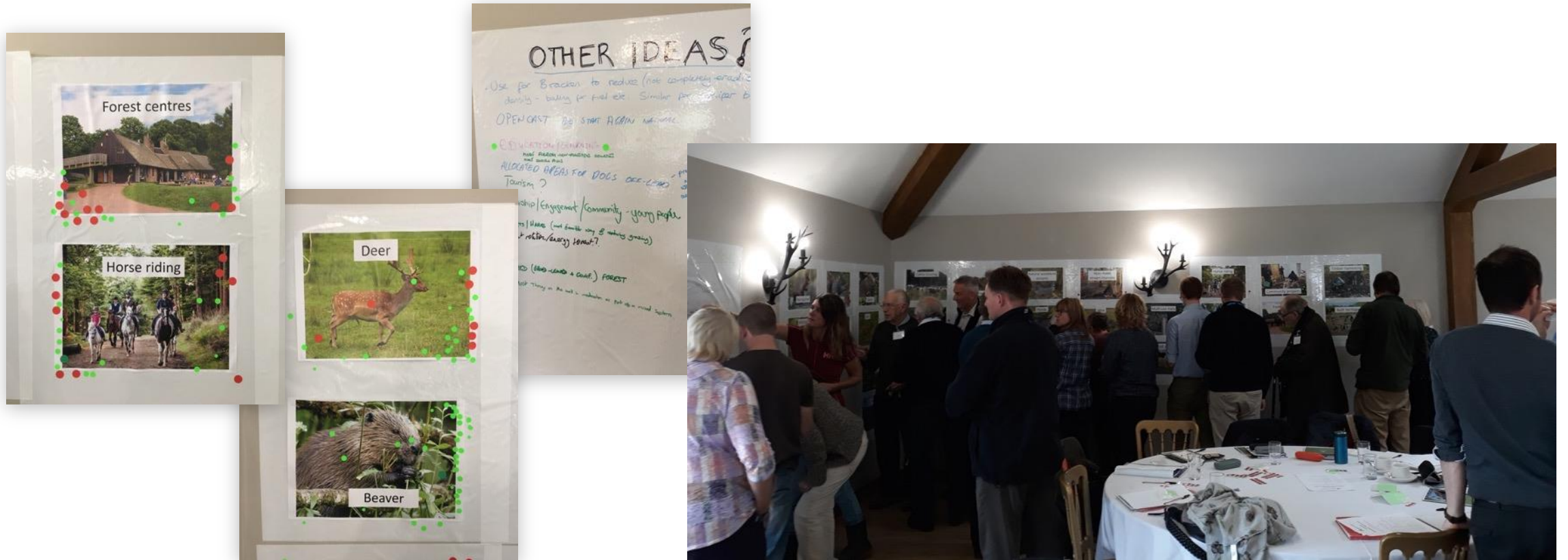
Challenges need to be handled day to day,  
A quiet life for an FC worker is not the way!  
With increasing workloads and little extra pay,  
It makes you question, should I stay?  
Let me think, is there another place I'd rather be?  
No, certainly not whilst I'm working for the Forestry.



# Park bench exercise summary

POSITIVE THEMES	NEGATIVE THEMES
Unique place	Litter / fly tipping / dog mess
Community Forest	Vandalism
Working Forest	Resistance to change
Diverse	Boar damage
History and heritage	Lack of understanding of what the Forestry Commission does
Something for everyone	Not valued by all

# Your future vision exercise



# Your future vision exercise summary

- Supportive of species reintroduction such as pine marten and beavers for wider benefits
- Would like to preserve ancient trees and native woodland
- Want to see less fencing and clear felled areas
- Prefer natural not manmade streams
- Want to see a better approach to managing recreation and community projects
- More control of wild boar and grey squirrel

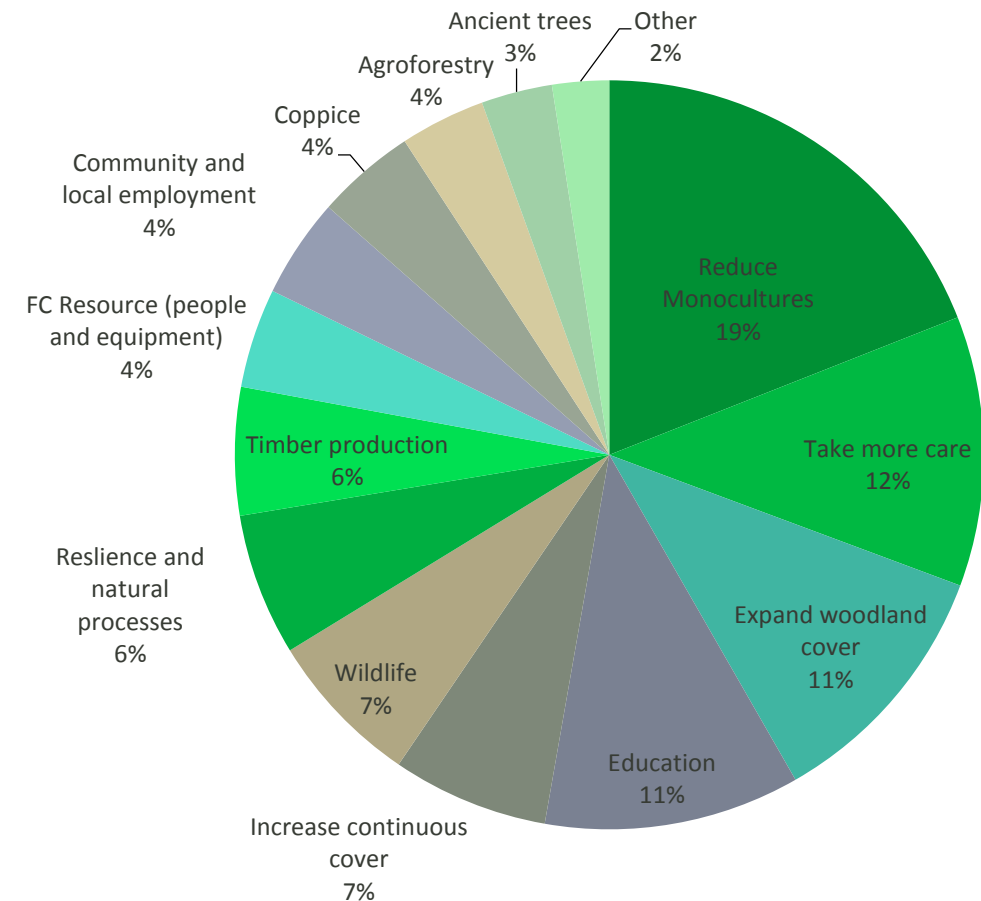


# Stop/Continue/Create exercise



# Stop/Continue/Create exercise summary: Trees and woodland

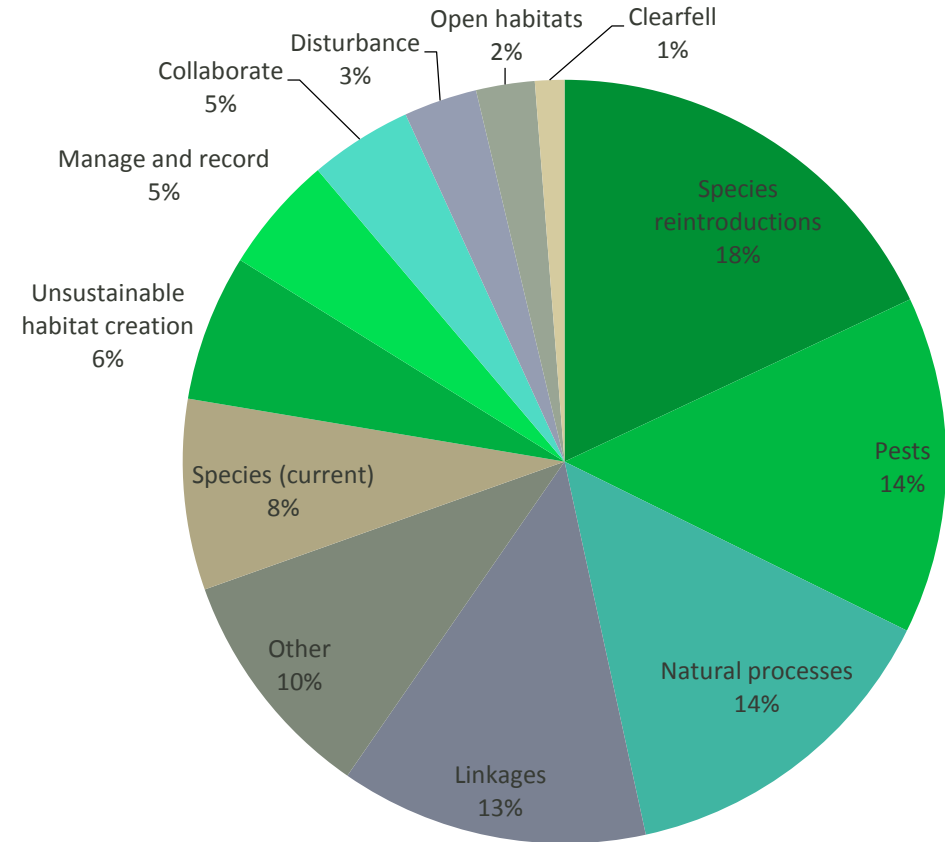
- Reduce species monocultures
- Take more care when carrying out forestry operations
- Plant more woodland
- Explain what we do and why we do it
- Reduce clear-felling
- Take wildlife into account when managing the forest
- Reduce grey squirrels
- Use community collaboration for woodland management
- Re-invigorate coppice throughout forest



# Stop/Continue/Create exercise summary:

## Wildlife and wild spaces

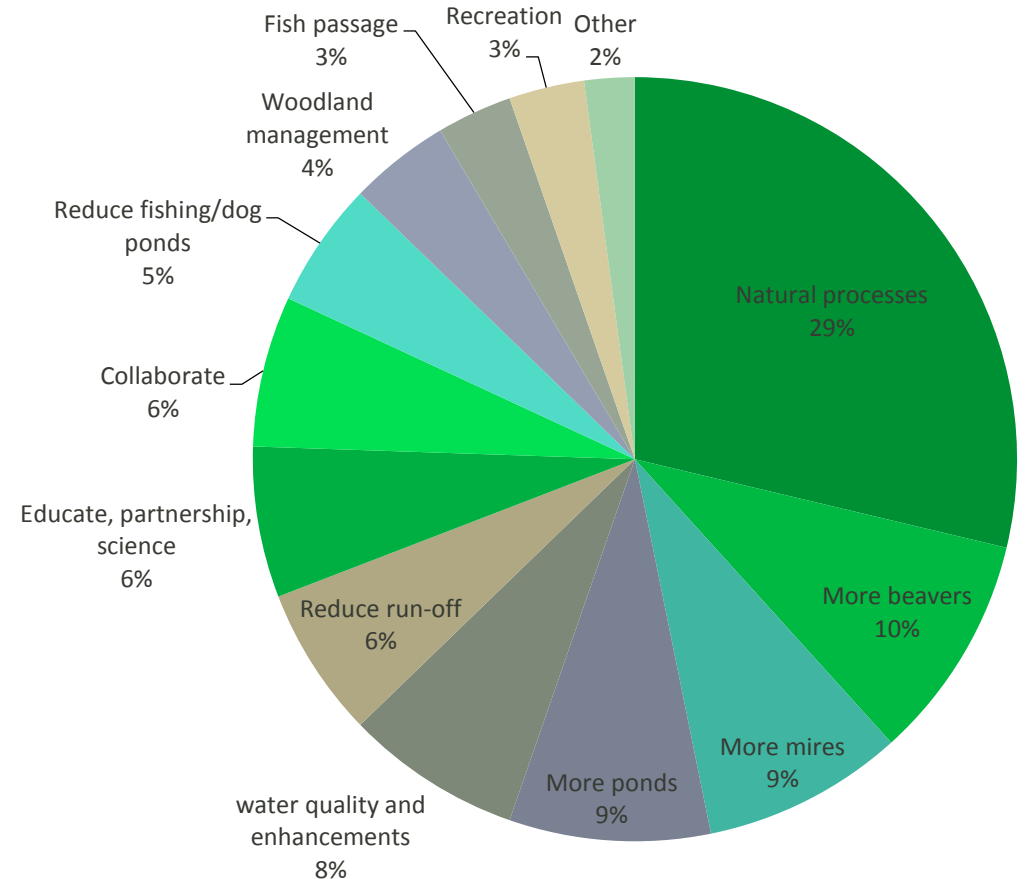
- Wildcat, pine marten, beavers, lynx should be reintroduced
- Current species are also important
- Boar, deer and squirrel should be managed
- Natural processes should be encouraged
- Habitats need to be better connected and monitored
- Partnership/education/community collaboration should be encouraged
- Reduce disturbance to wildlife and habitats through better dog management and recreation zoning
- Clear-fell should continue





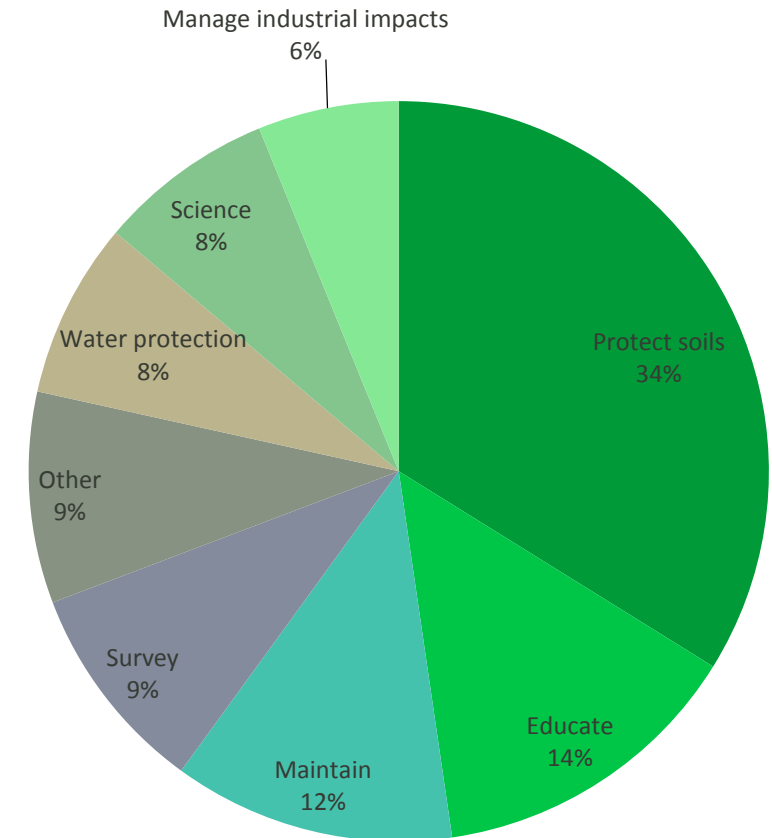
# Stop/Continue/Create exercise summary: Water

- Naturalise streams, waterbodies, headwaters
- Remove channels/forestry drains
- Using beavers in the landscape for a variety of benefits
- Use of mires in the right place
- Larger ponds and use stepping stones
- Reduce run-off from tracks and sedimentation
- Create school packs for science and monitoring
- Reduce impact of fishing and dogs on pond quality/biodiversity
- Stop planting conifers near streams
- Reduce barriers to fish access and fishing ponds



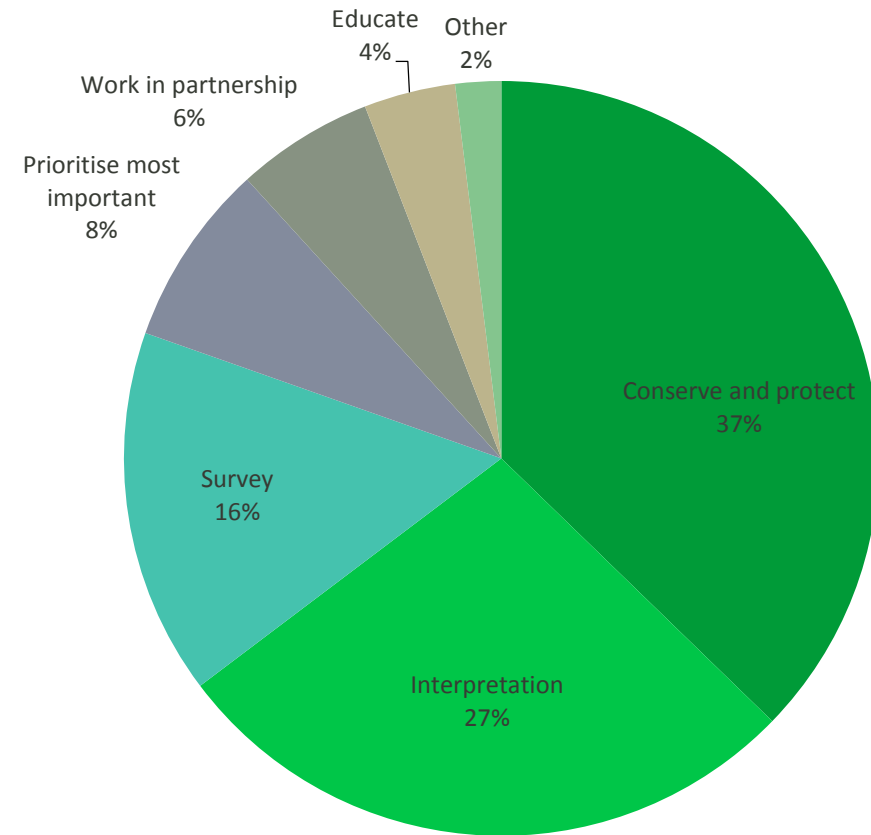
# Stop/Continue/Create exercise summary: Geology and soils

- Stop high impact operations, use the right machinery
- Interpretation around geology and soils of the forest
- Carry out more surveys to better inform management
- Plant right trees in the right place
- Protect watercourses from run-off and sedimentation
- Continue small scale mining and quarrying



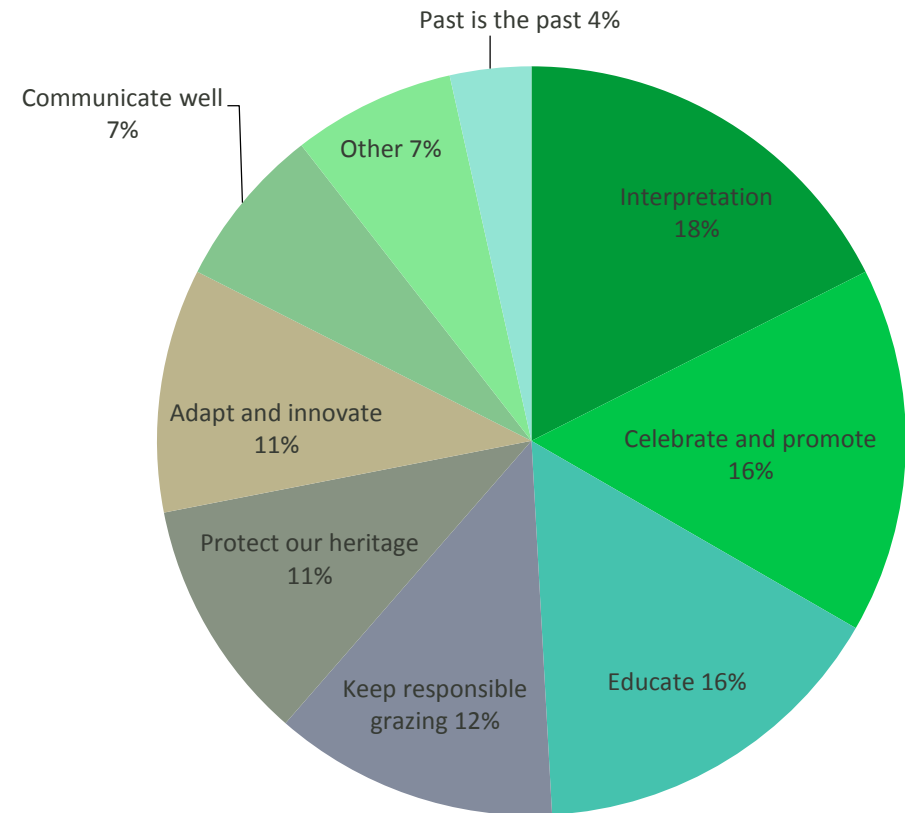
# Stop/Continue/Create exercise summary: Built heritage and archaeology

- Preserve, conserve and fund built heritage
- Promote through archaeological digs, access, advertising, tell the story
- Survey, record and map the resource
- Prioritise most important features
- Work in partnership with groups like Friends of Darkhill
- Create school education packs



# Stop/Continue/Create exercise summary: Cultural heritage

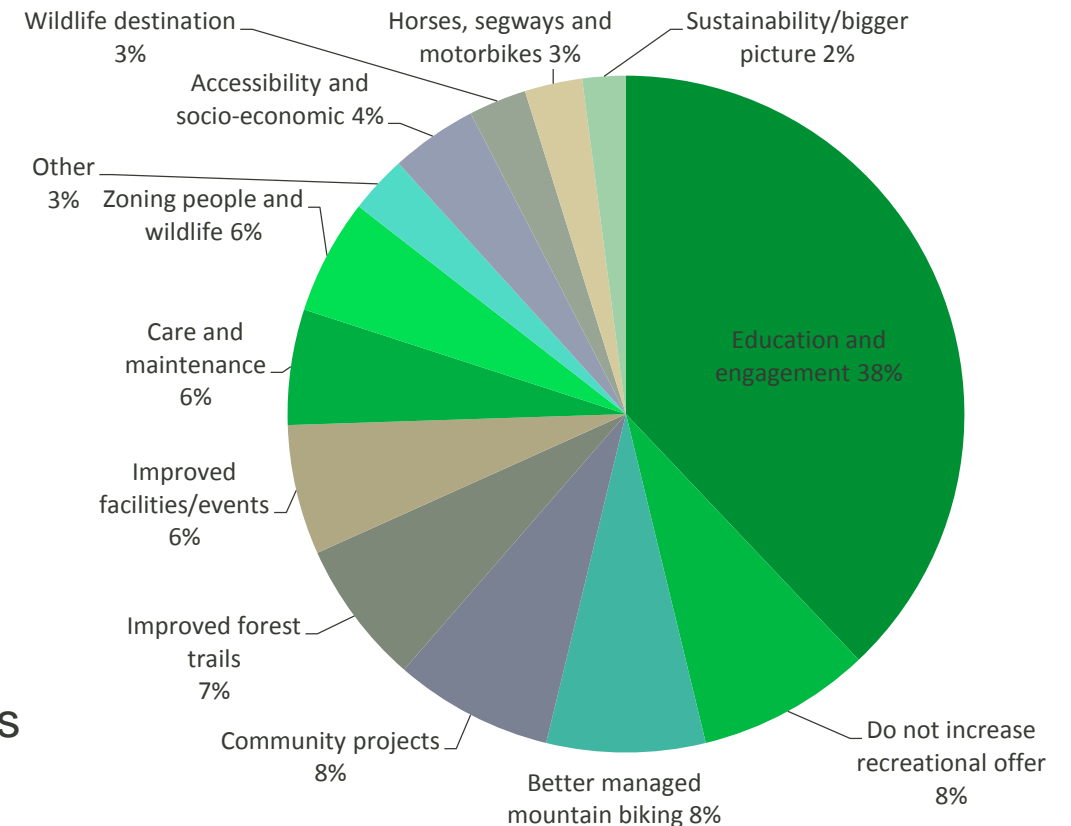
- Use apps to improve understanding
- Celebrate what we have
- Using a variety of grazing animal
- Protect the past – including mining and quarrying
- Adapt to the future using new and innovative ways of managing the forest
- The past should be left in the past



# Stop/Continue/Create exercise summary:

## Recreation and community

- Use forums, schools, rangers and apps for education
- Don't make the forest into a theme park
- Stop/reduce wild mountain biking trails
- Create new opportunities for community projects
- Create walks linking heritage sites
- Fix play equipment
- Zone wildlife and people so wildlife can remain undisturbed
- Easier access, wheelchair friendly paths and low cost parking
- Don't encourage horses, motorbikes and segways
- Green transport including electric car hook-up at centres





# Our vision

TO NURTURE A  
SHARED FOREST  
UNLIKE ANY OTHER

By allowing every decision we take to be guided by the specific potential of the land, as well as the varied influences of our ever-changing world, we will create a diverse and inclusive forest that is a global example of what can be achieved through forward-thinking forestry.

# What happens next?

## Timeline

- December 2018 – focus group meetings
- January and February 2019 – public consultation
- March 2019 – vision and principles of land management refinement
- April 2019 – Vision and principles of land management published and forest plan review commences (five year programme)





# THANK YOU

Any questions?