



Forestry England

Forestry and timber production

Forestry: what does it mean?

Match the forestry terminology to the correct images

Harvesting

The process of cutting and removing trees from the forest

Clearfell

To cut down all the trees in a particular area

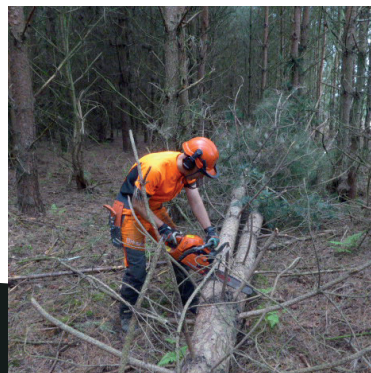
Making a rack
Stacking the logs to form a "rack"

Brashing
The removal of the lower branches of the tree

seen it?

☐

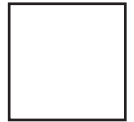
tick when you see evidence of this forest operation

☐☐☐



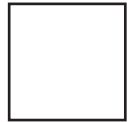
Loading

Putting the trees onto transport to take them out of the forest



Thinning

Removal of selected trees to prevent overcrowding of the forest



Logs left to season

Leaving the logs to reduce in moisture content before use



Ploughing

Preparing the ground for planting new trees

