

Ingrebourne Hill



When you visit Ingrebourne Hill there's a great deal to look out for.

Whether it's mountain bikes hurtling around the specially built track; spotting distant sights from its view point; taking in relaxing views whilst picnicking beside the lake; overseeing children playing at the scramble area or just observing the wildlife.

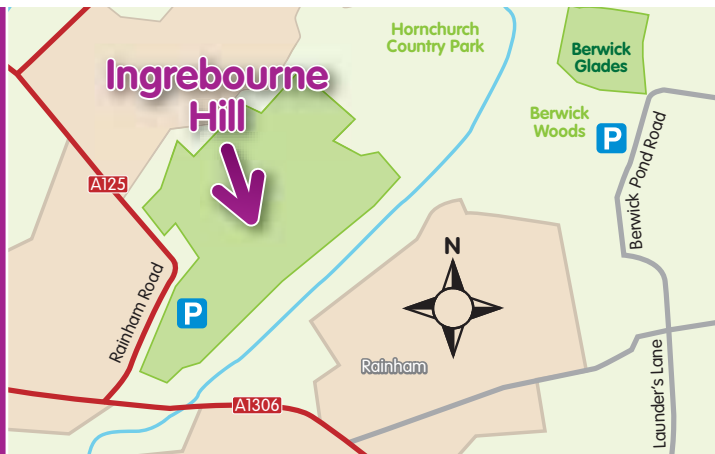
A great site – a gentle hill fringed by the Ingrebourne River and its reedbeds to the east and lakes to the south, offering brilliant views across the Thames from its centre, with play areas and gentle paths to the west.



Locations and information Enjoy your visit



Thames Chase



Public Transport:

Visit www.transportdirect.info

Post Code:

RM13 8ST

Car:

FREE car park on site, off the Rainham Road

OS Ref:

TQ 535 838



Thames Chase Community Forest:

Thames Chase is part of 12 Community Forests in England. With a network of 47 sites, its aim is to help promote the creation and continuing development of greenspace on the edge of East London and South Essex. The Forestry Commission own and manage 10 community woodlands within this area.

Contact:

Forestry Commission, FREEPOST, The Forest Centre,
Pike Lane, Upminster, Essex RM14 3NS
e: thameschase@forestry.gsi.gov.uk t: 01708 642 964

» To find out more about England's Forests,
get the Forestry Commission's iPhone App now.

» www.forestry.gov.uk/thameschase

Design: www.dynamiccreative.co.uk
07/11. © Forestry Commission



Paper certification:
Please recycle after use



Forestry Commission
England

Visit Ingrebourne Hill

Enjoy & Discover your forests & woodlands



www.forestry.gov.uk/thameschase

Ingrebourne Hill



Honouring One of the Few

Less than 3000 young men fought in the Battle of Britain and Squadron Leader Ronnie Stillwell was one of them.

In the summer of 1940 he was a young Sergeant flying Spitfires with 65 Squadron, then based at RAF Hornchurch as part of London's frontline.

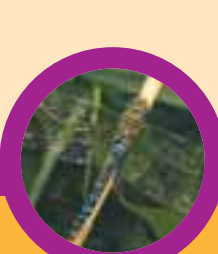
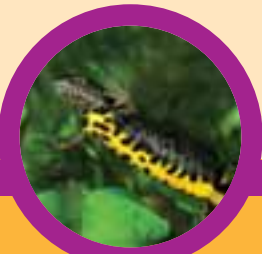
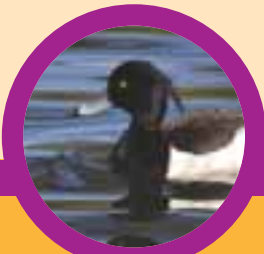
Ronnie won both the Distinguished Flying Medal (DFM) for his efforts in assisting downed colleagues and later the Distinguished Flying Cross (DFC) for destroying three enemy aircraft – a record that prompted us to name our lake after him.

Woodland Code: Cycle with care. Respect the peace and quiet of the woods and wildlife. Take your litter home with you. Never light fires and smokers take care. Dogs are welcome but please keep them under close control and always clean up after your pet.

Riders Code: Please walk or trot on the marked trails. Do not canter or gallop. Please do not ride on the pink paths – they are for pedestrians.

What else is nearby?

Next door there's Hornchurch Country Park with over 100ha of green space, 10km of walking, cycling and riding trails, a variety of habitats and the Second World War site of RAF Hornchurch. Alongside are Ingrebourne Marshes, a Site of Special Scientific Interest. Also, over the Ingrebourne River are Berwick Glades and Berwick Woods.



What's out or about?

| Jan | Feb | Mar | Apr | May | Jun | Jul | Aug | Sep | Oct | Nov | Dec |
|--|-------------------------------|--------------------------|-------------------------------|-----------------------------------|--------------------|---------------------|---|--------------------------|------------------------------------|----------------------|--|
| Wintering tufted ducks & pochard on the lake | Kestrels hunting from perches | Great crested newts mate | Skylarks flight song overhead | Reeds alive with migrant warblers | Water voles active | Grass snake basking | Dragonflies hawking Green woodpeckers anting | Lapwings gather overhead | Blackberries around site's margins | Weasels seen hunting | Fieldfare and redwing forage across the Hill |

There's plenty to see and hear throughout the year