

# South Reservoir Forest Design Plan

## Introduction

The South Reservoir forest design plan covers 5873 hectares of the forest from the south shore of Kielder reservoir. The terrain rolling hills incised by the Lewisburn and Cranecleugh burns and their tributaries. The wind hazard class of the plan area also reflects the variation in altitude, the lower slopes presenting more stable sites.. Opportunities therefore exist to employ continuous cover forestry on the more stable sites, though the some crops are beyond a point where conversion is practical and high windhazard class 5 of the upper slopes limits the ability to manage crops other than through clearfelling and restocking. Other than internal views along the C200 and the immediate south shore (now designated for management as continuous cover forestry) not prominent in any major views The majority of crops are glowing well (achieving yield class 12), and are a mixture of younger second rotation crops, and first rotation crops of which the majority are at or past the date of economic maturity.

## **Achievements since last revision**

1. Border mire sites No SSSI mire sites are present within the plan area though the none designated sites of Stot Crag and The Rigg are know being maintained as open habitat, the other site are scheduled for clearance and will be maintained as open habitat with a minimum of a 30m buffer open around them
2. Moorland Boundary : an element of open woodland is being established at the forest open moor interface
3. Ancient monuments : Hawkhirst Romano British Settlement (smr 25129), is covered by scheduled ancient monument plans agreed with English Heritage
4. Upper restocking boundary : where clearfelling has taken place adjacent to the open moor of the Western Moor the upper forest boundary has been lower to bring it of the moorland plateau, and element of open woodland are being established to mitigate the previously harsh transition from high forest to open moorland
5. Lake shore and lower reaches of the Lewisburn,, Hawkhirst, and Bull crag : More stable site types and therefore greater opportunities for employing continuous cover management, were designated as such in the last plan and have been managed as such,.

## **Alteration to felling and restocking proposals**

Felling proposals : some minor changes to coupe boundaries

Restocking proposals : Redistribute the restocking of Sitka spruce and other conifer in light of the moratorium on restocking with Lodgepole pine due to the disease Red Band Needle Blight.








Forestry Commission  
England

Kielder Forest

Location map

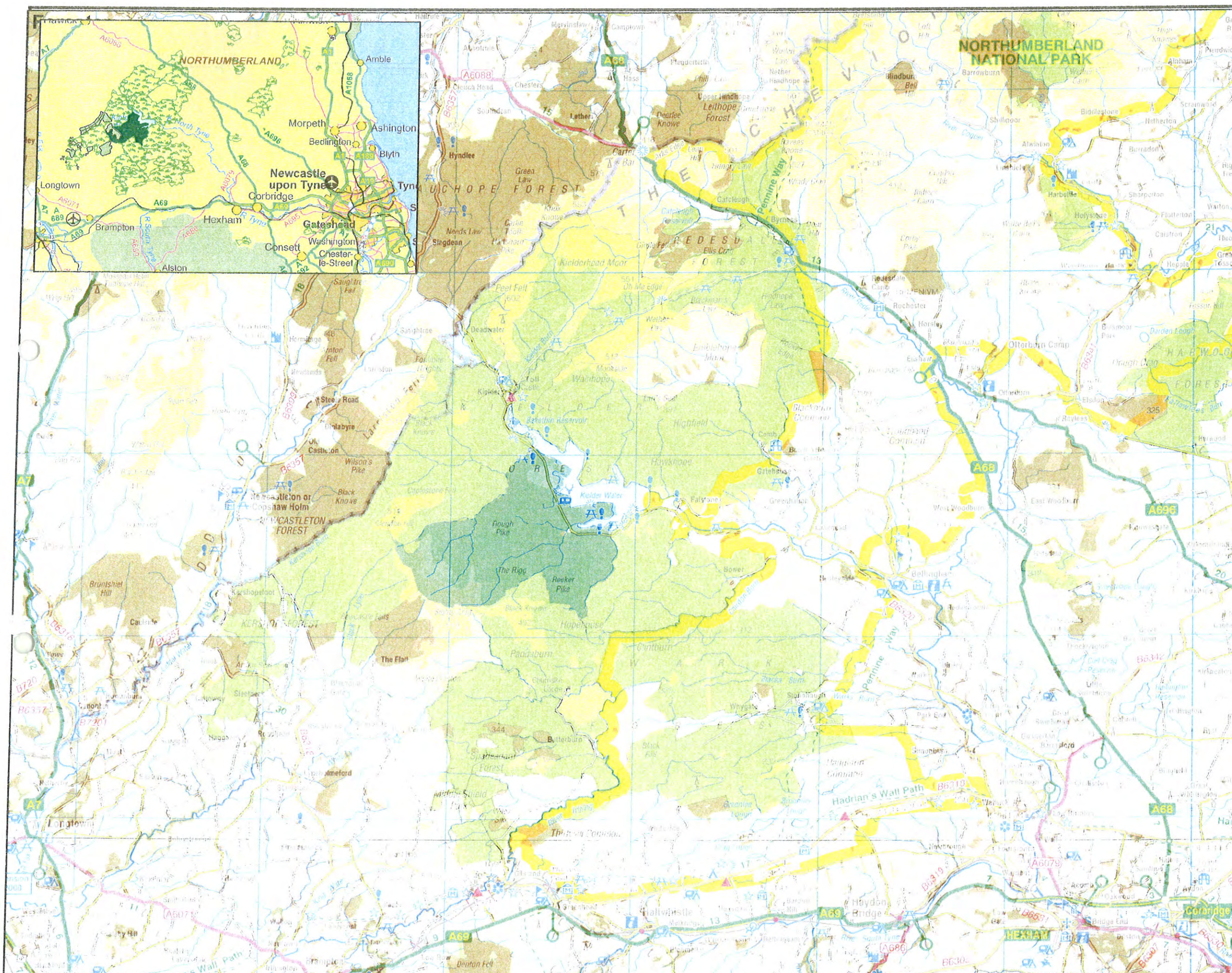
### Legend

-  Plan area
-  Other FC land
-  Other woodland

Scale  
Date

1:200,000  
Jan 2011

This map is based upon Ordnance Survey material with the permission of  
Ordnance Survey on behalf of the Controller of Her Majesty's Stationery Office  
© Crown Copyright. Unauthorised reproduction infringes Crown Copyright and  
may lead to prosecution or civil proceedings. Forestry Commission 100025498







Forestry Commission  
England

Kielder Forest

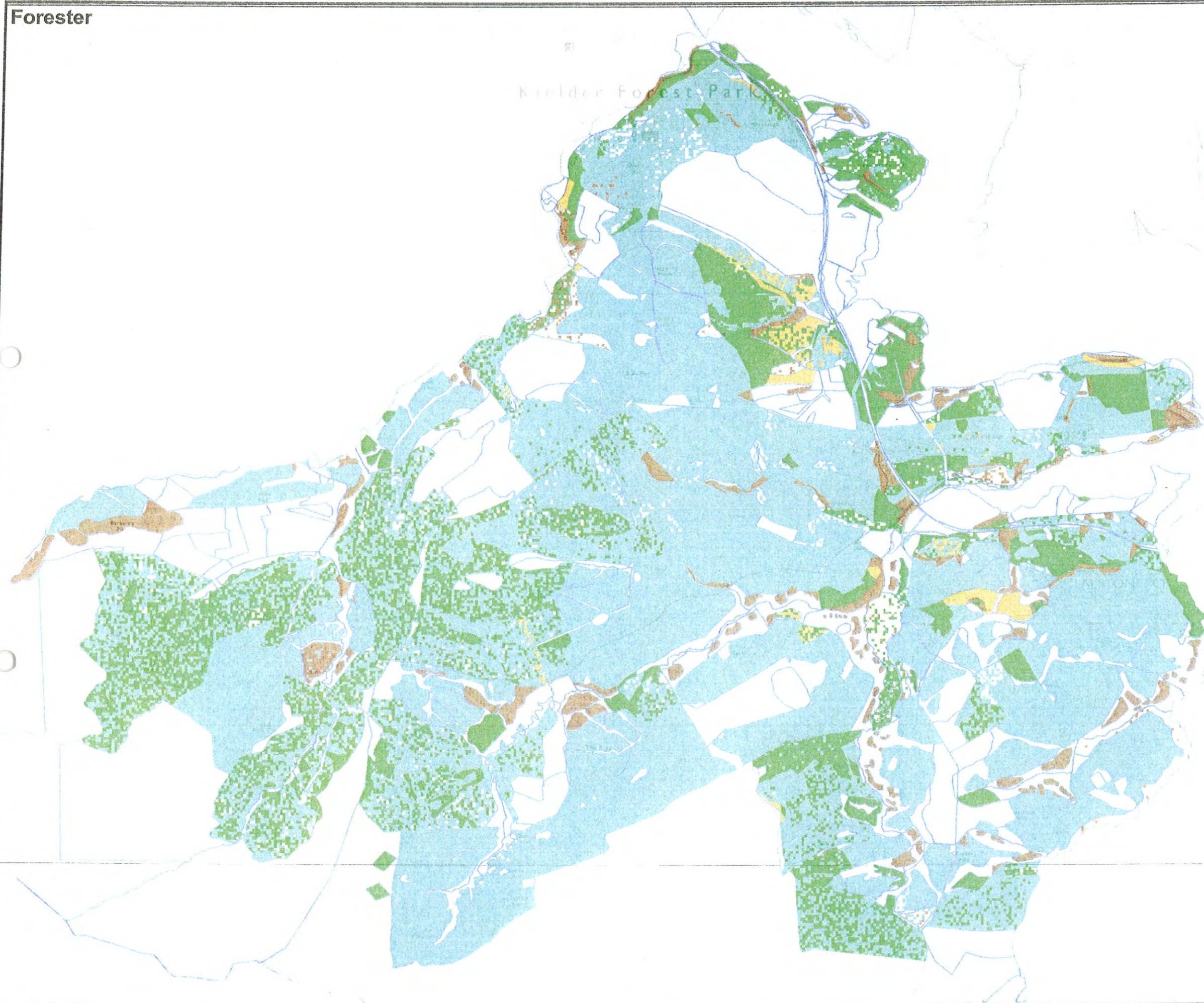
## Current Species

## Legend

### Components

#### Species

-  Broadleaf
-  Sitka spruce
-  Other evergreen conifer
-  Larch



Scale  
Date

1:35,000  
Jan 2011





Forestry Commission  
England

Kielder Forest

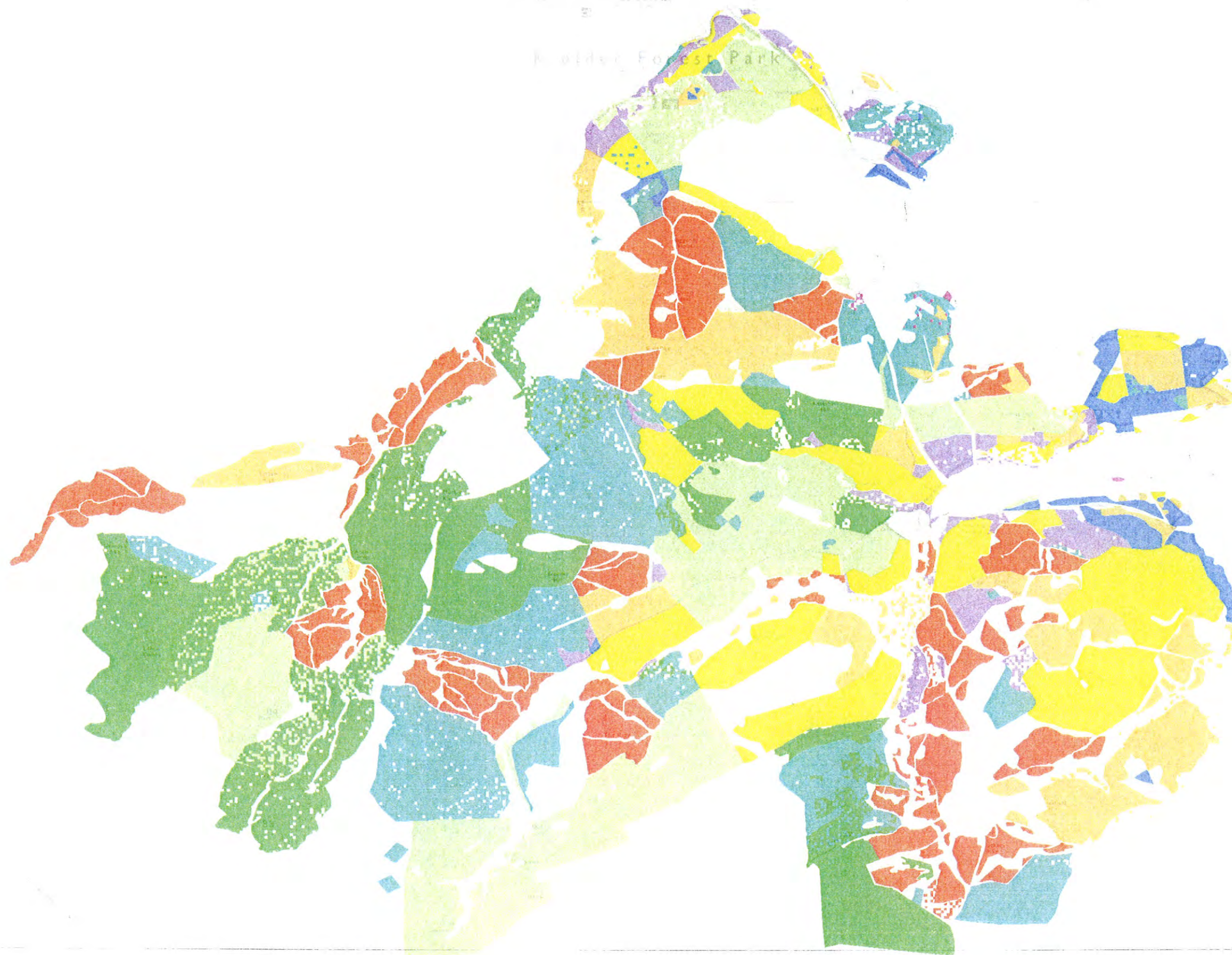
Planting Year

### Legend

#### Components

#### PLYR

	Pre1930
	1930 - 39
	1940 - 49
	1950 - 59
	1960 - 69
	1970 - 79
	1980 - 89
	1990 - 99
	Post 1999



Scale  
Date

1:40,000  
Jan 2011



Forester



Forestry Commission  
England







Kielder Forest

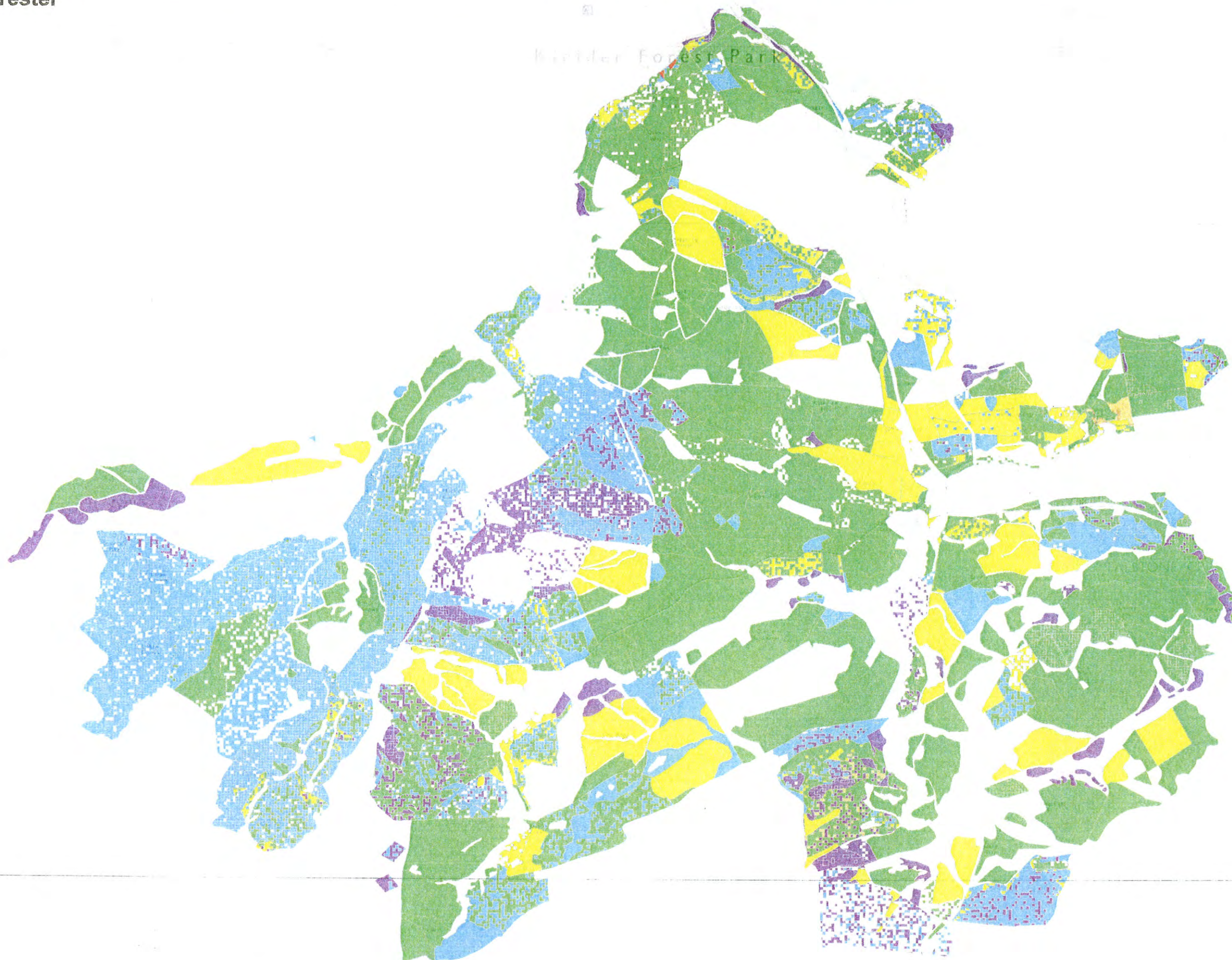
Yield Class

### Legend

#### Components

#### YLDC

	22 plus
	18 to 20
	14 to 16
	10 to 12
	6 to 8
	2 to 4
	0



Scale  
Date

1:35,000  
Jan 2011

This map is based upon Ordnance Survey material with the permission of  
Ordnance Survey on behalf of the Controller of Her Majesty's Stationery Office  
© Crown Copyright. Unauthorised reproduction infringes Crown Copyright and  
may lead to prosecution or civil proceedings. Forestry Commission 100025498



Forester

Kielder Forest

Kielder Forest Park



Forestry Commission  
England

Kielder Forest

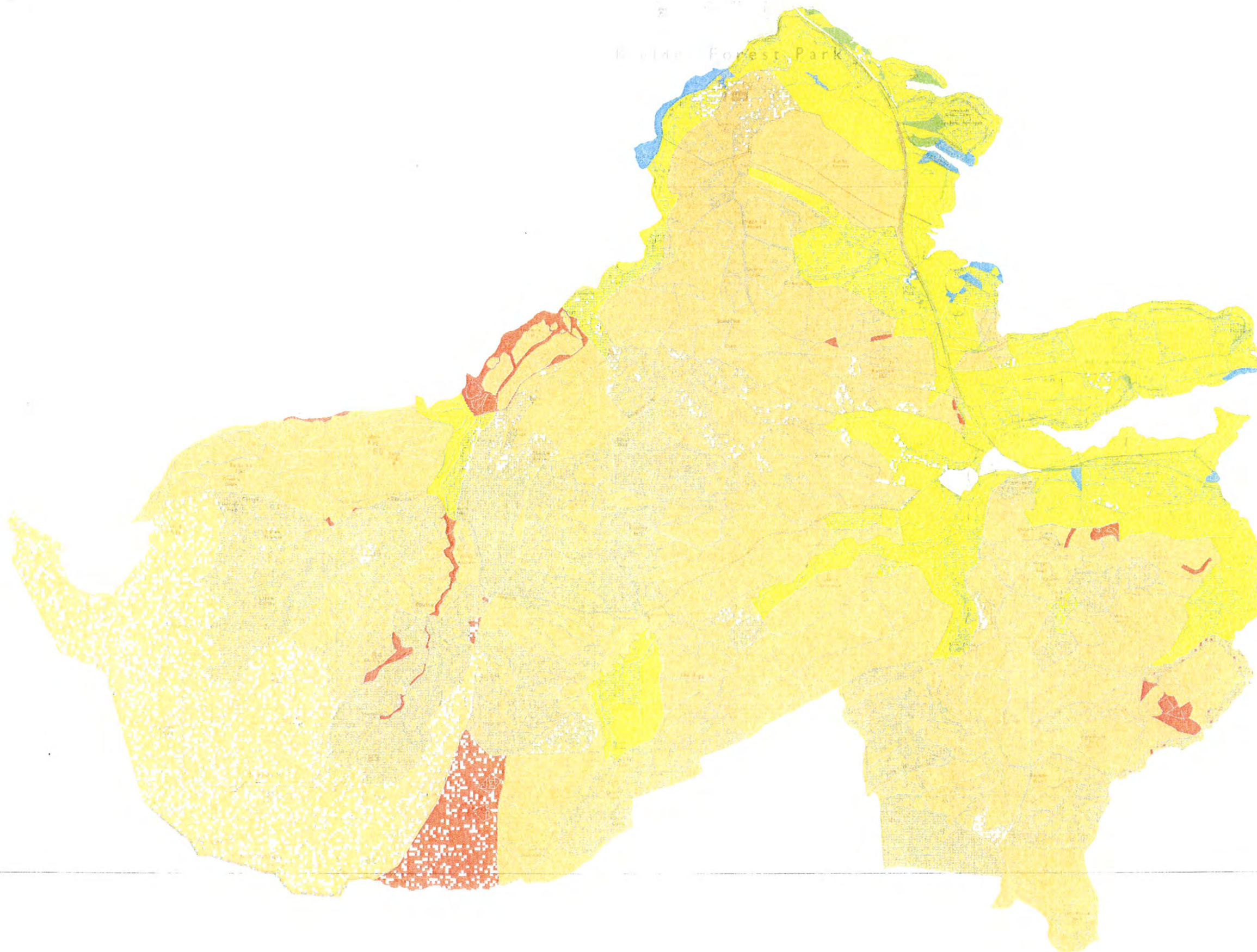
Windhazard Class

### Legend

#### Components

#### WHCL

- |   |
|---|
| 1 |
| 2 |
| 3 |
| 4 |
| 5 |
| 6 |



Scale  
Date

1:40,000  
Jan 2011

This map is based upon Ordnance Survey material with the permission of Ordnance Survey on behalf of the Controller of Her Majesty's Stationery Office © Crown Copyright. Unauthorised reproduction infringes Crown Copyright and may lead to prosecution or civil proceedings. Forestry Commission. 100025498



Forester

Kielder Forest





Forestry Commission  
England

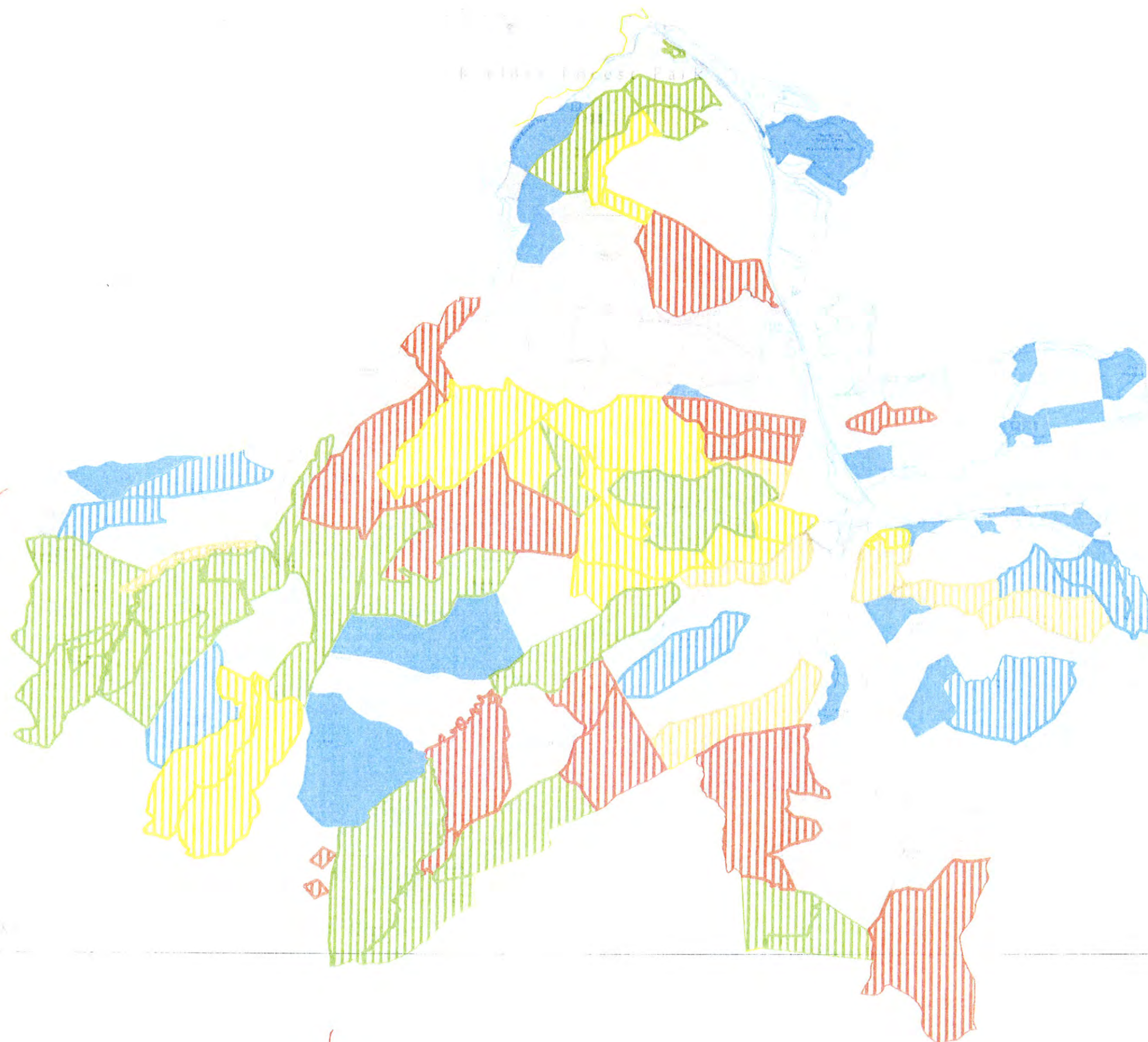
Kielder Forest

## Economic Felling

### Legend

#### Coupes OPTIMALYR

-  beyond economic
-  2012 - 2016
-  2017 - 2021
-  2022 - 2026
-  2027 - 2031
-  2032 - 2036
-  >2036
-  Continuous cover



Scale  
Date

1:40,000  
Jan 2011

This map is based upon Ordnance Survey material with the permission of Ordnance Survey on behalf of the Controller of Her Majesty's Stationery Office. © Crown Copyright. Unauthorised reproduction infringes Crown Copyright and may lead to prosecution or civil proceedings. Forestry Commission. 100025498



Forester

Kielder Forest



Forestry Commission  
England

Kielder Forest

## Landform

### Legend

#### landform

-  Major Ridges and Spurs
-  Minor Ridges and Spurs
-  Major Hollows and Gullies
-  Minor Hollows and Gullies

Scale  
Date

1:40,000  
Jan 2011

This map is based upon Ordnance Survey material with the permission of  
Ordnance Survey on behalf of the Controller of Her Majesty's Stationery Office  
© Crown Copyright. Unauthorised reproduction infringes Crown Copyright and  
may lead to prosecution or civil proceedings. Forestry Commission. 100025498



Forester

Kielder Forest

Kielder Forest Park



Forestry Commission  
England

Kielder Forest

Conservation

### Legend

- Conservation Site Point
- Conservation Site Line
- Conservation Site Polygon
- SAC
- NNR
- SSSI

### asnw

### STATUS

- ASNW
- PAWS

### archaeology

- Listed building
- Scheduled monument
- Unscheduled monument
- archaeology\_line

### water\_courses

- Major watercourses
- Minor watercourses

Scale  
Date

1:40,000  
Jan 2011

This map is based upon Ordnance Survey material with the permission of  
Ordnance Survey on behalf of the Controller of Her Majesty's Stationary Office  
© Crown Copyright. Unauthorised reproduction infringes Crown Copyright and  
may lead to prosecution or civil proceedings. Forestry Commission 100025498



Forester

Kielder Forest















Forestry Commission  
England

Kielder Forest

Other Resources

### Legend

-  Recreation site
-  FC trails
-  Footpath
-  Bridleway
-  BOAT
-  Restricted byway
-  Water pipeline
-  Powerline Overhead
-  Powerline Underground
-  Gas Pipeline
-  Class A
-  Other FC Roads

Scale  
Date

1:40,000  
Jan 2011

This map is based upon Ordnance Survey material with the permission of Ordnance Survey on behalf of the Controller of Her Majesty's Stationery Office © Crown Copyright. Unauthorised reproduction infringes Crown Copyright and may lead to prosecution or civil proceedings. Forestry Commission 100025498





Forestry Commission  
England

Kielder Forest

## Design Concept

### Leaplish Waterside Park

The area of Leaplish Waterside Park does not fall under Forest Enterprise management. However the transition between the park and the surrounding forest should be maintained to look seamless as at present.

### Hawkhirst scout camp

Maintain the feel of high forest around the scout camp.

### Continuous cover

The less exposed sites within the plan area provide the potential for continuous cover silviculture to be employed.

### Ancient monuments

A number of ancient monuments are present within the plan area these can be opened up at clearfelling and maintained as open space through subsequent rotations.

### Moorland boundary

Mitigate the transition of open moorland to high forest at restocking, through the introduction of open woodland and open space.

### Upper forest edge

Look to lower the edge of high forest as well as mitigating the transition of moorland to forest.

### Valley zone

The valleys associated with Lewis, Craneclough and Little Whickhope burns forms the most structural landform in the plan area, provides opportunities for adding diversity into the structure of the forest.

Border mires are of considerable conservation interest. Remove the trees from the mires at clearfelling and leave as open habitats through subsequent rotations.

## Legend

### category

-  Continuous cover
-  Forest edge
-  Leaplish
-  Moorland boundary
-  Scout camp
-  Valley zones
-  Border mires
-  Main watercourse

Scale  
Date

1:40,171  
Jan 2011

This map is based upon Ordnance Survey material with the permission of Ordnance Survey on behalf of the Controller of Her Majesty's Stationary Office. © Crown Copyright. Unauthorised reproduction infringes Crown Copyright and may lead to prosecution or civil proceedings. Forestry Commission 100025498



Forester

Kielder Forest



Forestry Commission

FOREST ENTERPRISE DESIGN PLAN

No. 108 Name South Reservoir

Amendment No. Dated

Approved by R.J. Row PBS

Name/Grade

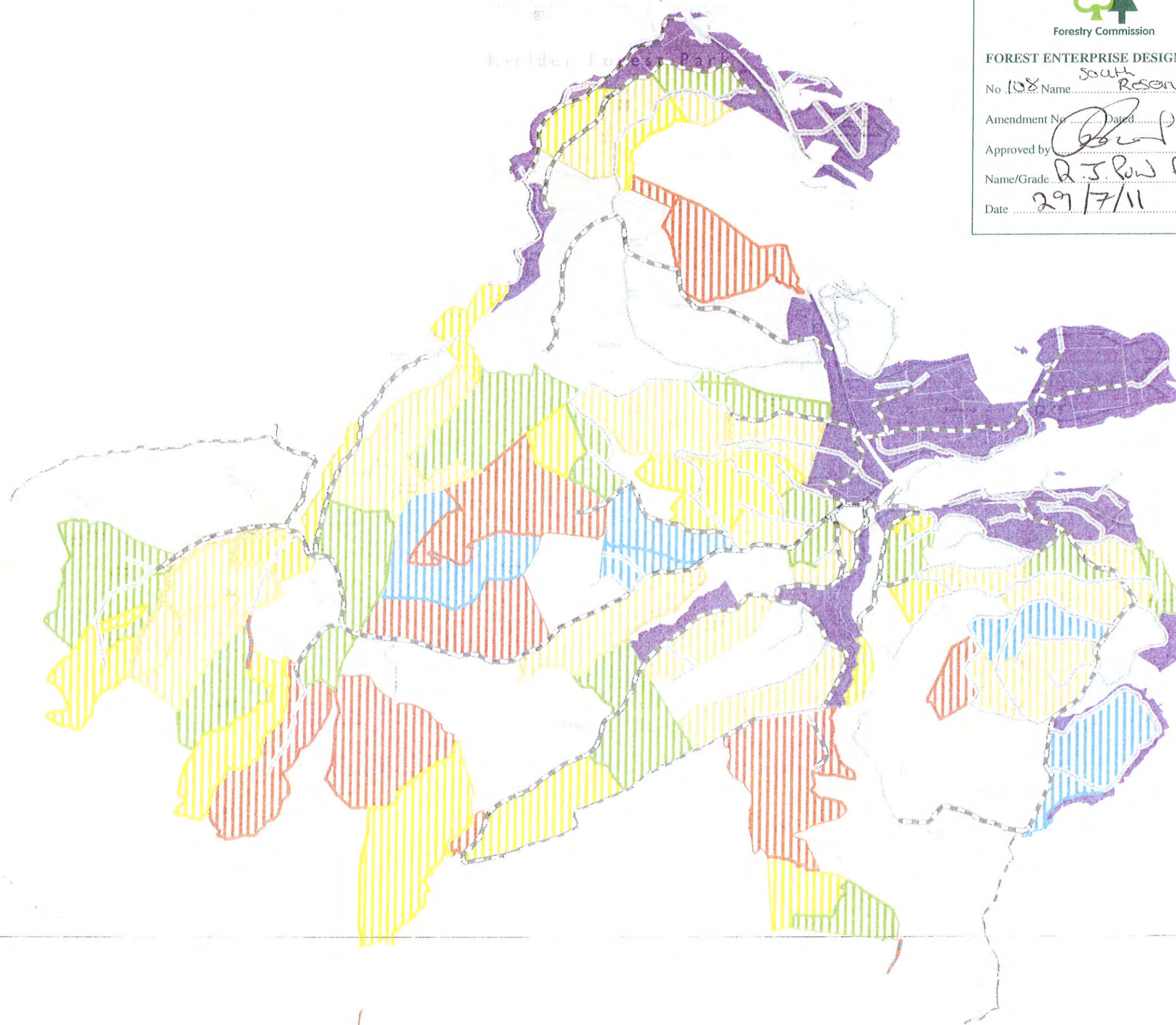
Date 29/7/11



Forestry Commission  
England

Kielder Forest

Felling Proposals



### Legend

#### Coupes

#### FELLING\_YEAR

- 2007 - 2011
- 2012 - 2016
- 2017 - 2021
- 2022 - 2026
- 2027 - 2031
- 2032 - 2036
- >2036
- CCF/Min Intervention
- Other FC Roads
- Class A
- Proposed roads

Scale  
Date

1:40,000  
Jan 2011

This map is based upon Ordnance Survey material with the permission of Ordnance Survey on behalf of the Controller of Her Majesty's Stationery Office © Crown Copyright. Unauthorised reproduction infringes Crown Copyright and may lead to prosecution or civil proceedings. Forestry Commission. 100025498



Forester

Kielder Forest



Forestry Commission

FOREST ENTERPRISE DESIGN PLAN

No. 108 Name South Reservoir

Amendment No. 1 Dated 29/7/11

Approved by [Signature]

Name/Grade D.J. Lewis PBS

Date 29/7/11



Forestry Commission  
England

Kielder Forest

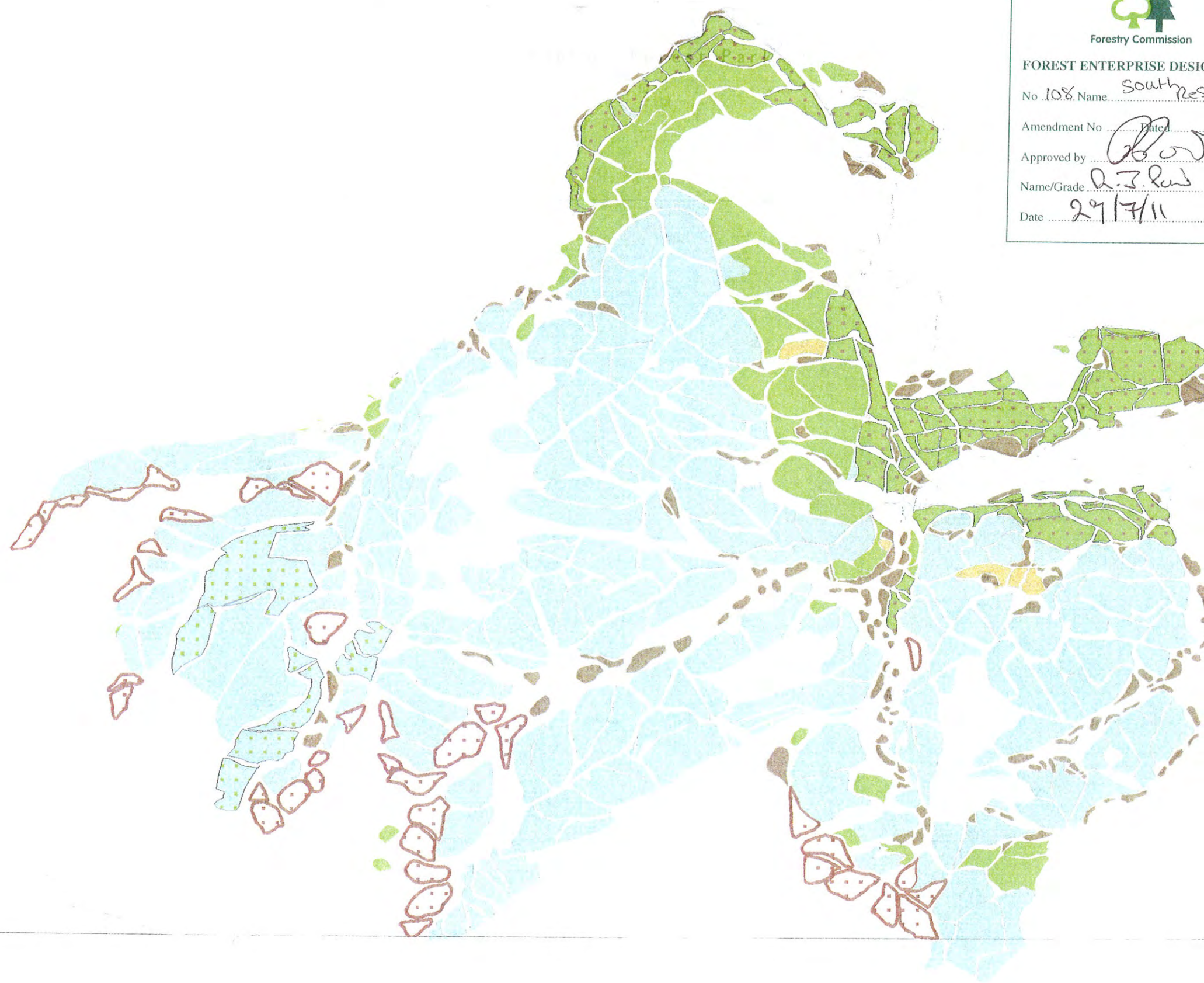
## Restocking Proposals

### Legend

#### Revised restocking

#### Species

- Larch
- Larch Broadleaves
- Larch Sitka spruce
- Larch / Other conifer
- Broadleaf
- Other conifer
- Mixed woodland
- Open woodland
- Sitka Lodgepole
- Sitka spruce



Scale  
Date

1:40,171  
Jan 2011

This map is based upon Ordnance Survey material with the permission of Ordnance Survey on behalf of the Controller of Her Majesty's Stationery Office. © Crown Copyright. Unauthorised reproduction infringes Crown Copyright and may lead to prosecution or civil proceedings. Forestry Commission. 100025498