



Forestry England

Beechenhurst

# Learning in the nation's forests

## About us

Forestry England cares for more land and trees than any other organisation in the country. For more than 100 years we've been growing, shaping and caring for the nation's forests. As well as creating vital habitats for wildlife, tackling climate change, and supplying sustainable home-grown timber, we provide beautiful and awe-inspiring places for people to connect with nature and enjoy themselves.

## Our vision

Forestry England's long-term vision for learning is for every child in England to benefit from an educational engagement with the nation's forests and understand how our forests are managed sustainably.

1,500

forests across England waiting to be explored - there's a forest near you!



A classroom with no walls... supporting you on a forest learning journey for every child

- ✔ Free educational resources
- ✔ Termly e-newsletter
- ✔ Hireable resources
- ✔ Introductory talks
- ✔ Self-guided forest visits
- ✔ Fieldwork opportunities



# Free educational resources

Our free, downloadable teaching resources are curriculum-linked, cover core subjects and are easily adaptable. Find the perfect resource for using in your classroom, school grounds or local forest. Here's a flavour of what's on offer...



## Pre-visit resources

Prepare your class for their forest visit with our pre-visit resources for EYFS, KS1 and KS2, including our Forest cycle PowerPoint: [Access pre-visit resources here](#)

## Fieldwork in the forest

Ideas for fieldwork activities for your class.

## Curriculum-linked lesson plans

Subject-based lesson plans covering KS1 and KS2.

## Creative writing

Activities that connect children to nature and inspire some creative writing for KS1-KS3.

## KS3 lesson plans

Lesson plans created in collaboration with Geography Southwest: [geographysouthwest.co.uk](http://geographysouthwest.co.uk)

## Stick Man and Superworm activity sheets

Bring Julia Donaldson's books to life with EYFS and KS1.

## Wellbeing & mindfulness

Calm and reflective activities for KS2 and KS3.



## Resources

For all these resources and much, much more go to: [forestryengland.uk/article/learning-resources-forest-visits](http://forestryengland.uk/article/learning-resources-forest-visits)

## Termly e-newsletter

Subscribe to our learning newsletter to receive inspiring activity ideas and training opportunities. Perfect for planning forest visits and classroom activities: [forestryengland.uk/sign-up-learning](http://forestryengland.uk/sign-up-learning)

# Self-led forest visits

Supporting you to deliver successful teacher-led forest visits. Plan your perfect visit by hiring one of our self-guided activities.

## Ranger in a bag

Ranger in a Bag has everything you need for a fun-filled forest adventure - all zipped up in a handy backpack: [forestryengland.uk/ranger-bag-beechenhurst](https://forestryengland.uk/ranger-bag-beechenhurst). This resource supports you to deliver learning about forests at your own pace with experiential learning activities, scenarios, and role play.

Choose from Trainee Forester, Trainee Woodland Artist, Trainee Wellbeing Champion and Trainee Ecologist. Ranger in a Bag is suitable for children aged 4-11, with enough resources for 35 children.

## Sensory explorer bag

A complete resource for a sensory experience of our fantastic forests! Suitable for EYFS and KS1 with enough resources for 35 children: [forestryengland.uk/sensory-explorer-beechenhurst](https://forestryengland.uk/sensory-explorer-beechenhurst)

### Cost

£35 +VAT per bag, £50 +VAT for 2 bags or £65 +VAT for 3 bags if bringing multiple classes. Ranger in a Bag and Sensory Explorer are available at Wyre Forest, Haldon Forest Park and Beechenhurst.

## Introductory talks

Request a free, introductory talk from a member of Forestry England staff to tell you more about the forest, its trees, and wildlife at: [learning.west@forestryengland.uk](mailto:learning.west@forestryengland.uk). (Subject to staff availability).

## Forest classrooms

Log sitting circles are provided in several Forestry England woodlands for your forest school sessions or outdoor learning needs. Contact the learning team to find out more: [learning.west@forestryengland.uk](mailto:learning.west@forestryengland.uk)

## Fieldwork opportunities

The benefits of fieldwork are huge. Not only will your class make great memories, but they'll become competent in team building and problem-solving. They'll learn new practical skills and essential exam content (for KS3 or above): [forestryengland.uk/pdf-download/how-use-fieldwork-your-class](https://forestryengland.uk/pdf-download/how-use-fieldwork-your-class)

## Gruffalo orienteering

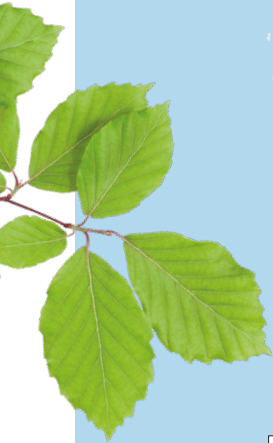
Try our fun, navigational challenge using a simple map to find 12 Gruffalo markers hidden in the deep, dark wood. Answer questions along the way and gain valuable skills in decision making and map reading. Available at Wyre Forest, Haldon Forest Park, and Mallards Pike: [forestryengland.uk/mallards-pike/gruffalo-orienteering-mallards-pike](https://forestryengland.uk/mallards-pike/gruffalo-orienteering-mallards-pike)

## Children's University

We have a range of activities to help children learn in the forest while earning stamps for their Children's University passport. Our seasonal activities and healthy connections sheets can also be completed in any outdoor space with trees: [forestryengland.uk/childrens-university](https://forestryengland.uk/childrens-university)



# Our forests



## A forest visit...

- ✔ Brings learning to life through hands-on experiences
- ✔ Boosts mental health and wellbeing
- ✔ Builds connections to nature

## For more information

We facilitate school group visits to several of our larger sites through a simple booking process (must be booked in advance). For more information or an informal chat about any of the options listed please email the learning team: [learning.west@forestryengland.uk](mailto:learning.west@forestryengland.uk)

## Planning your visit

From risk assessments to what to wear - we've got you covered. Here's everything you need to think about before you visit: [forestryengland.uk/planning-your-visit](https://forestryengland.uk/planning-your-visit)