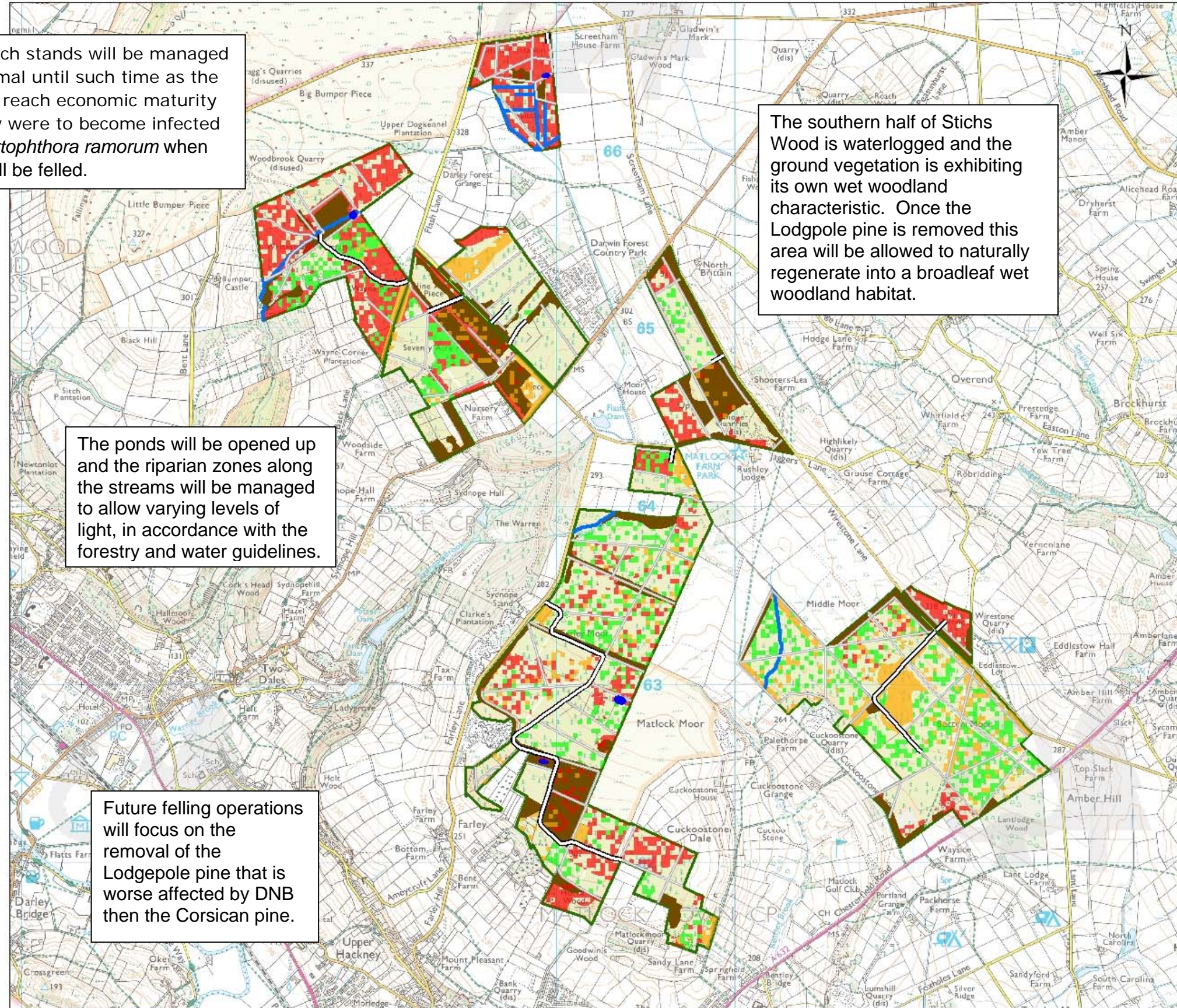


The larch stands will be managed as normal until such time as the stands reach economic maturity or they were to become infected by *Phytophthora ramorum* when they will be felled.

The southern half of Sticks Wood is waterlogged and the ground vegetation is exhibiting its own wet woodland characteristic. Once the Lodgepole pine is removed this area will be allowed to naturally regenerate into a broadleaf wet woodland habitat.

The ponds will be opened up and the riparian zones along the streams will be managed to allow varying levels of light, in accordance with the forestry and water guidelines.

Future felling operations will focus on the removal of the Lodgepole pine that is worse affected by DNB then the Corsican pine.



Central Forest District

Concept Map

-  Forestry Roads & Rides
-  Lodgepole pine
-  Corsican pine
-  Larch
-  Broadleaves
-  Ponds
-  Water Courses
-  Management Area



1:20,000
scale at A3



This map is based on Forestry Commission data and is published with the permission of the Forestry Commission. It is not a legal document. The Forestry Commission is not responsible for any loss or damage arising from its use. The Forestry Commission is not responsible for any loss or damage arising from its use.

