

South England FD

South Downs 2 FDP (Charlton Main, East)

Future Habitats Map



- Predominantly native woodland with a small element of non-native species (<20%). Small patches of open space support early successional vegetation during the establishment of young native trees.
- Mixed woodland with native trees regenerating amongst gradually replacing conifer woodland. Small patches of open space support successional vegetation during the establishment of young native trees.
- Pure and mixed woodland stocked with site and climate suitable species, usually through natural regeneration. Enrichment with site and climate suitable species where necessary to maintain woodland cover. Small patches of open space support successional vegetation during the establishment of successor trees.
- Pure and mixed woodland stocked with site and climate suitable species, either by replanting or through natural regeneration/enrichment.
- Old and long-term retention stands of any species, focusing on the maintenance of big trees in the landscape.
- Yew-dominated woodland.
- Sweet Chestnut coppice on a rotation providing cyclical open space with early successional vegetation during the re-growth phase of the stools.
- Open space.
- PAWS woodland within FC management boundary

- Open water
- Management area
- Compartments
- Sub-compartments
- Forest road
- Forest access tracks
- Watercourse

Produced by the Planning Team January 2013

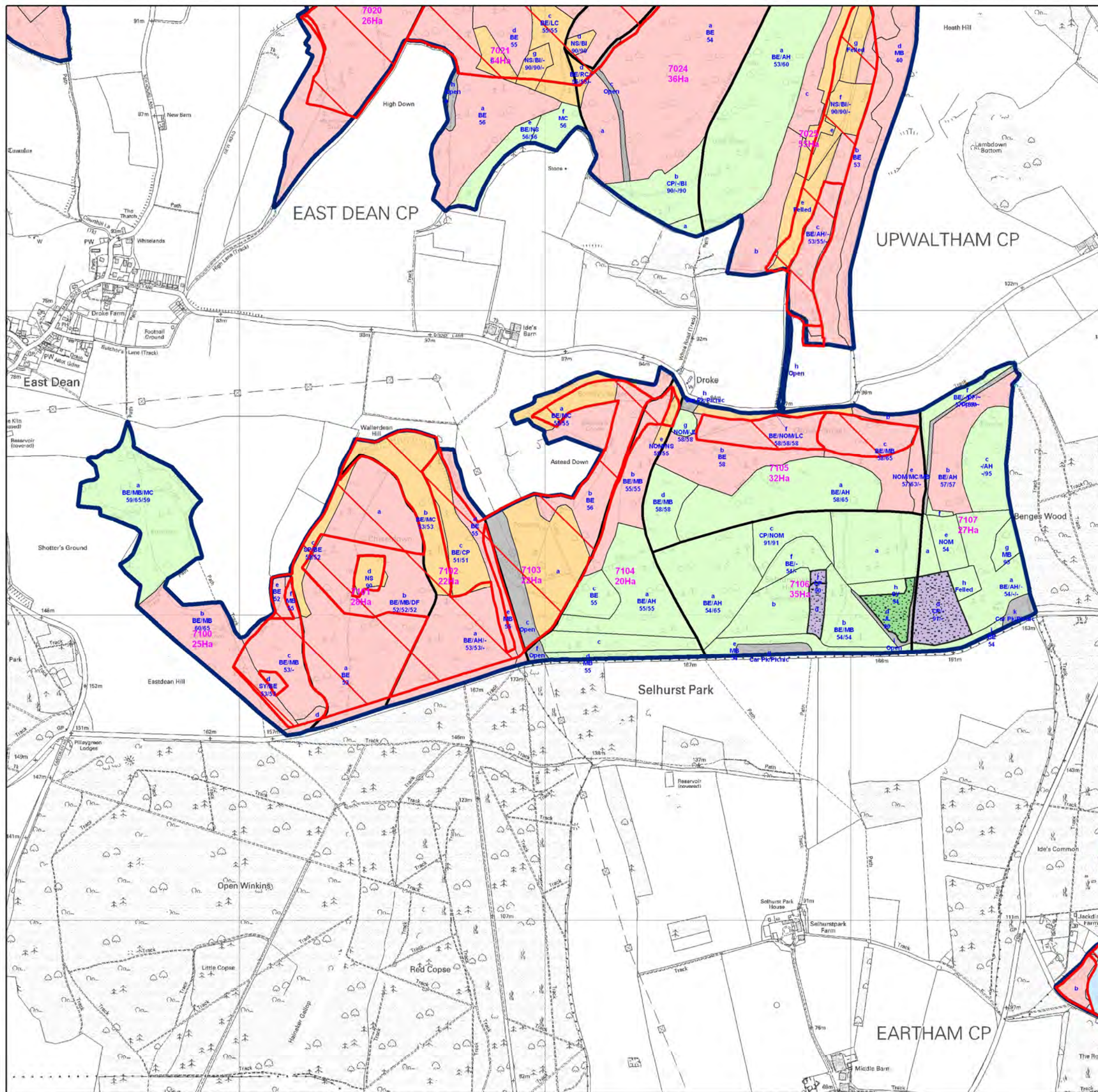
This map is based upon Ordnance Survey material with the permission of Ordnance Survey on behalf of the Controller of Her Majesty's Stationary Office ©Crown Copyright. Unauthorised reproduction infringes Crown Copyright and may lead to prosecution or civil proceedings. Forestry Commission, 100025498, 2013



Forestry Commission
England

South England FD

South Downs 2 FDP (Selhurst Park) Habitat Restoration and Felling Map



- Broadleaf-dominated woodland. Manage under an appropriate shelterwood system. Thin to favour best native tree, focussing on the production of quality timber.
- Manage under an appropriate shelterwood system. Thin to favour best native tree, focussing on the production of quality timber and the gradual reduction of non-native species to 20% of canopy or less.
- Manage under an appropriate shelterwood system. Thin to favour best tree, focussing on the production of quality timber.
- Old stands and stands earmarked for long-term retention. Manage as a selection system, selecting trees to fell individually.
- Yew-dominated woodland. Manage as a selection system, selecting trees to fell individually.
- Coppice woodland on a rotation.
- Existing open space.
- PAWS woodland within FC management boundary

Clearfell

- 2012-2016
- 2017-2021
- 2022-2026
- 2027-2031
- 2032-2036
- 2037-2041
- Beyond 2042

- Open water
- Management area
- Compartments
- Sub-compartments
- Forest road
- Forest access tracks
- Watercourse

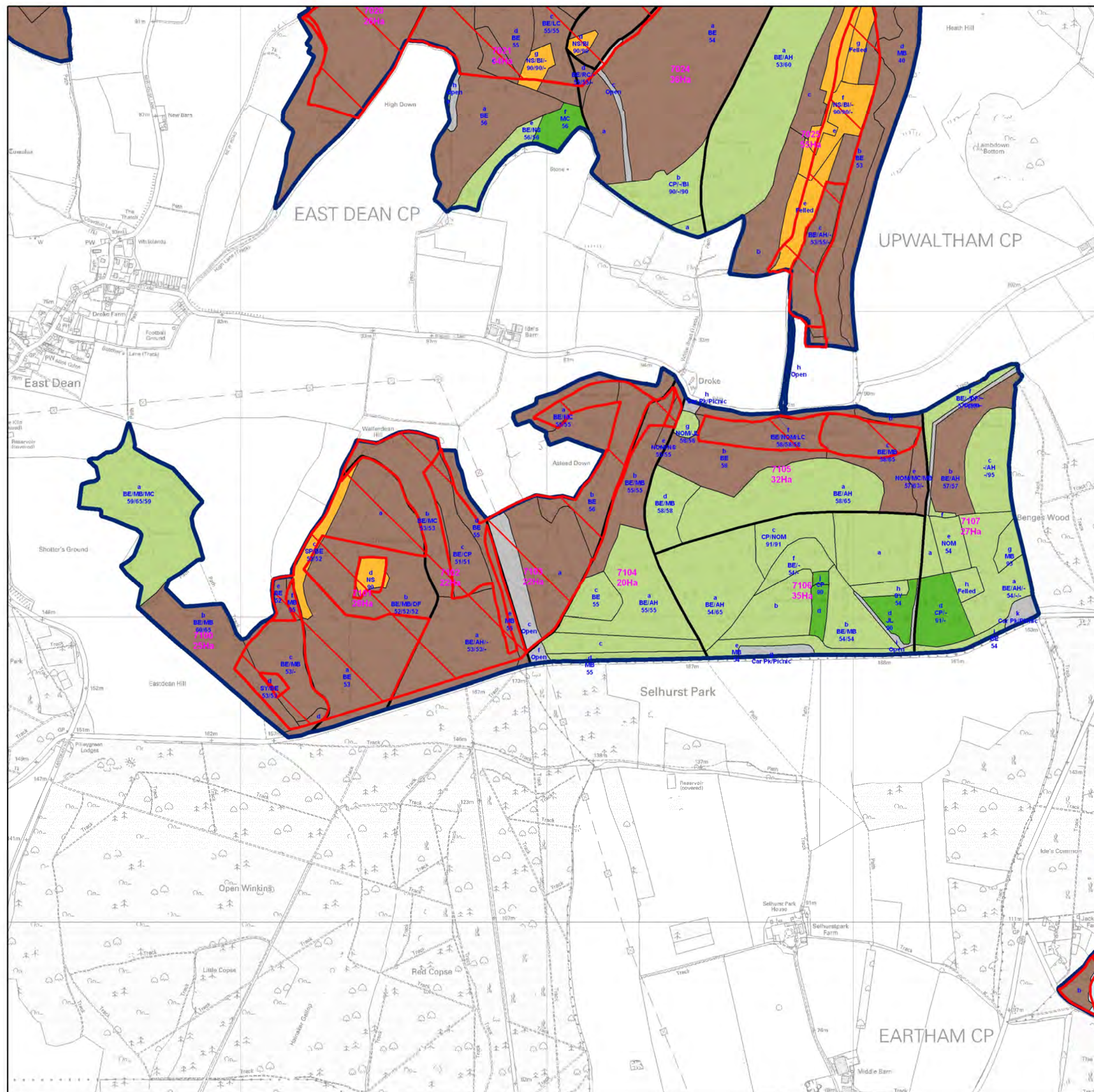
Produced by the Planning Team March 2013





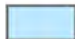




This map is based upon Ordnance Survey material with the permission of Ordnance Survey on behalf of the Controller of Her Majesty's Stationary Office © Crown Copyright. Unauthorised reproduction infringes Crown Copyright and may lead to prosecution or civil proceedings. Forestry Commission, 100025498, 2013


1:12,500



South England FD
South Downs 2 FDP (Selhurst Park)
Future Habitats Map



- | | |
|---|--|
|  | Predominantly native woodland with a small element of non-native species (<20%). Small patches of open space support early successional vegetation during the establishment of young native trees. |
|  | Mixed woodland with native trees regenerating amongst gradually replacing conifer woodland. Small patches of open space support successional vegetation during the establishment of young native trees. |
|  | Pure and mixed woodland stocked with site and climate suitable species, usually through natural regeneration. Enrichment with site and climate suitable species where necessary to maintain woodland cover. Small patches of open space support successional vegetation during the establishment of successor trees. |
|  | Pure and mixed woodland stocked with site and climate suitable species, either by replanting or through natural regeneration/enrichment. |
|  | Old and long-term retention stands of any species, focusing on the maintenance of big trees in the landscape. |
|  | Yew-dominated woodland. |
|  | Sweet Chestnut coppice on a rotation providing cyclical open space with early successional vegetation during the re-growth phase of the stools. |
|  | Open space. |
|  | PAWS woodland within FC management boundary |

- | | | | |
|---|------------------|---|----------------------|
|  | Open water |  | Forest road |
|  | Management area |  | Forest access tracks |
|  | Compartments |  | Watercourse |
|  | Sub-compartments | | |

Produced by the Planning Team January 2013

This map is based upon Ordnance Survey material with the permission of Ordnance Survey on behalf of the Controller of Her Majesty's Stationary Office ©Crown Copyright. Unauthorised reproduction infringes Crown Copyright and may lead to prosecution or civil proceedings. Forestry Commission, 100025498, 2013.



1:12,500



Forestry Commission
England

South England FD

South Downs 2 FDP (Eartham)

Habitat Restoration and Felling Map

- Broadleaf-dominated woodland. Manage under an appropriate shelterwood system. Thin to favour best native tree, focussing on the production of quality timber.
- Manage under an appropriate shelterwood system. Thin to favour best native tree, focussing on the production of quality timber and the gradual reduction of non-native species to 20% of canopy or less.
- Manage under an appropriate shelterwood system. Thin to favour best tree, focussing on the production of quality timber.
- Old stands and stands earmarked for long-term retention. Manage as a selection system, selecting trees to fell individually.
- Yew-dominated woodland. Manage as a selection system, selecting trees to fell individually.
- Coppice woodland on a rotation.
- Existing open space.
- PAWS woodland within FC management boundary

Clearfell

- 2012-2016
- 2017-2021
- 2022-2026
- 2027-2031
- 2032-2036
- 2037-2041
- Beyond 2042

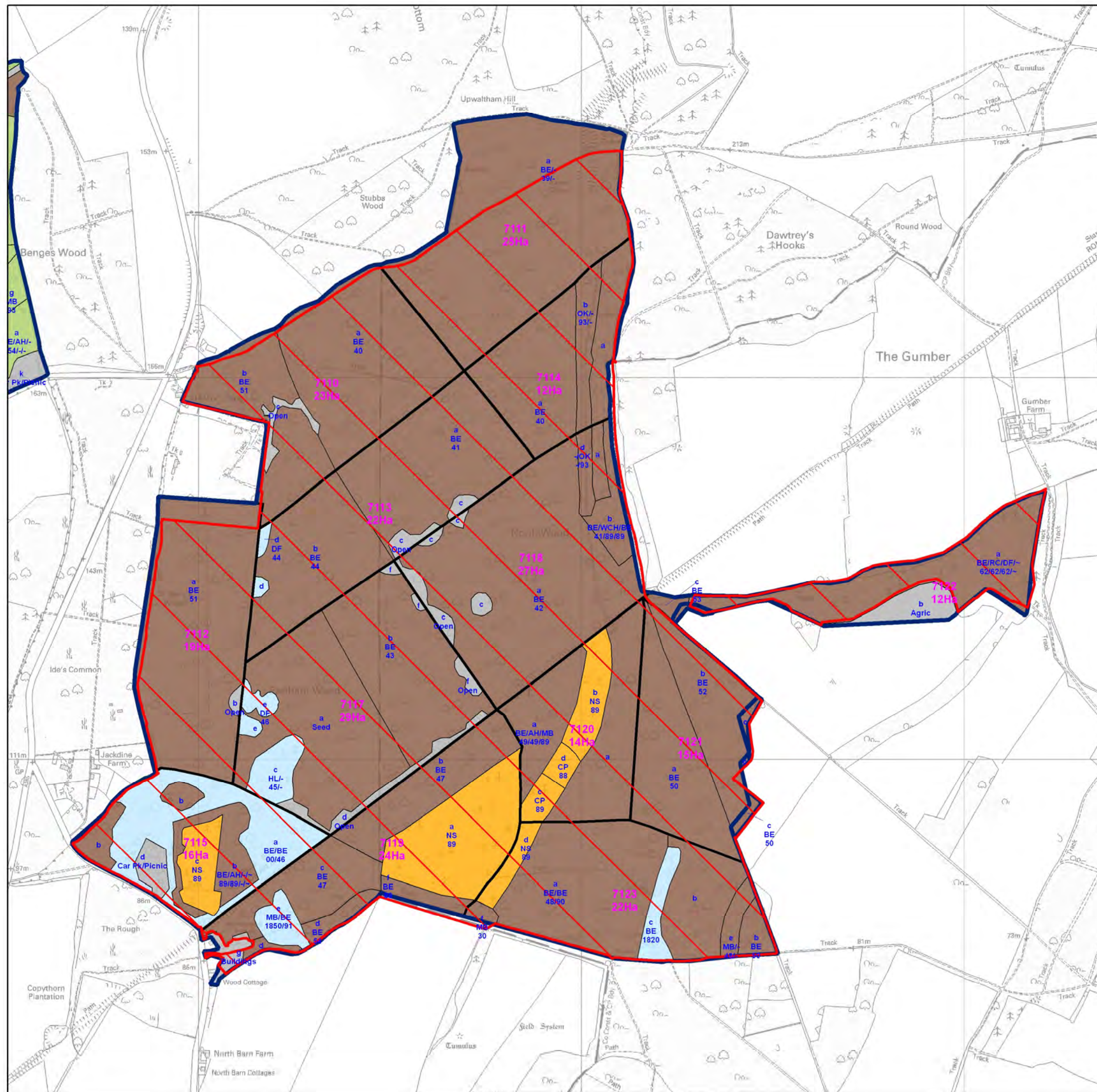
- Open water
- Management area
- Compartments
- Sub-compartments
- Forest road
- Forest access tracks
- Watercourse

Produced by the Planning Team March 2013

This map is based upon Ordnance Survey material with the permission of Ordnance Survey on behalf of the Controller of Her Majesty's Stationary Office © Crown Copyright. Unauthorised reproduction infringes Crown Copyright and may lead to prosecution or civil proceedings. Forestry Commission, 100025498, 2013

1:10,000

South England FD
South Downs 2 FDP (Eartham)
Future Habitats Map



- Predominantly native woodland with a small element of non-native species (<20%). Small patches of open space support early successional vegetation during the establishment of young native trees.
- Mixed woodland with native trees regenerating amongst gradually replacing conifer woodland. Small patches of open space support successional vegetation during the establishment of young native trees.
- Pure and mixed woodland stocked with site and climate suitable species, usually through natural regeneration. Enrichment with site and climate suitable species where necessary to maintain woodland cover. Small patches of open space support successional vegetation during the establishment of successor trees.
- Pure and mixed woodland stocked with site and climate suitable species, either by replanting or through natural regeneration/enrichment.
- Old and long-term retention stands of any species, focusing on the maintenance of big trees in the landscape.
- Yew-dominated woodland.
- Sweet Chestnut coppice on a rotation providing cyclical open space with early successional vegetation during the re-growth phase of the stools.
- Open space.
- PAWS woodland within FC management boundary

- Open water
- Management area
- Compartment
- Sub-compartment
- Forest road
- Forest access tracks
- Watercourse

Produced by the Planning Team January 2013

This map is based upon Ordnance Survey material with the permission of Ordnance Survey on behalf of the Controller of Her Majesty's Stationary Office ©Crown Copyright. Unauthorised reproduction infringes Crown Copyright and may lead to prosecution or civil proceedings. Forestry Commission, 100025498, 2013.

N
1:10,000



Forestry Commission
England

South England FD

South Downs 2 FDP (Houghton Forest) Habitat Restoration and Felling Map

- Broadleaf-dominated woodland. Manage under an appropriate shelterwood system. Thin to favour best native tree, focussing on the production of quality timber.
- Manage under an appropriate shelterwood system. Thin to favour best native tree, focussing on the production of quality timber and the gradual reduction of non-native species to 20% of canopy or less.
- Manage under an appropriate shelterwood system. Thin to favour best tree, focussing on the production of quality timber.
- Old stands and stands earmarked for long-term retention. Manage as a selection system, selecting trees to fell individually.
- Yew-dominated woodland. Manage as a selection system, selecting trees to fell individually.
- Coppice woodland on a rotation.
- Existing open space.
- PAWS woodland within FC management boundary

Clearfell

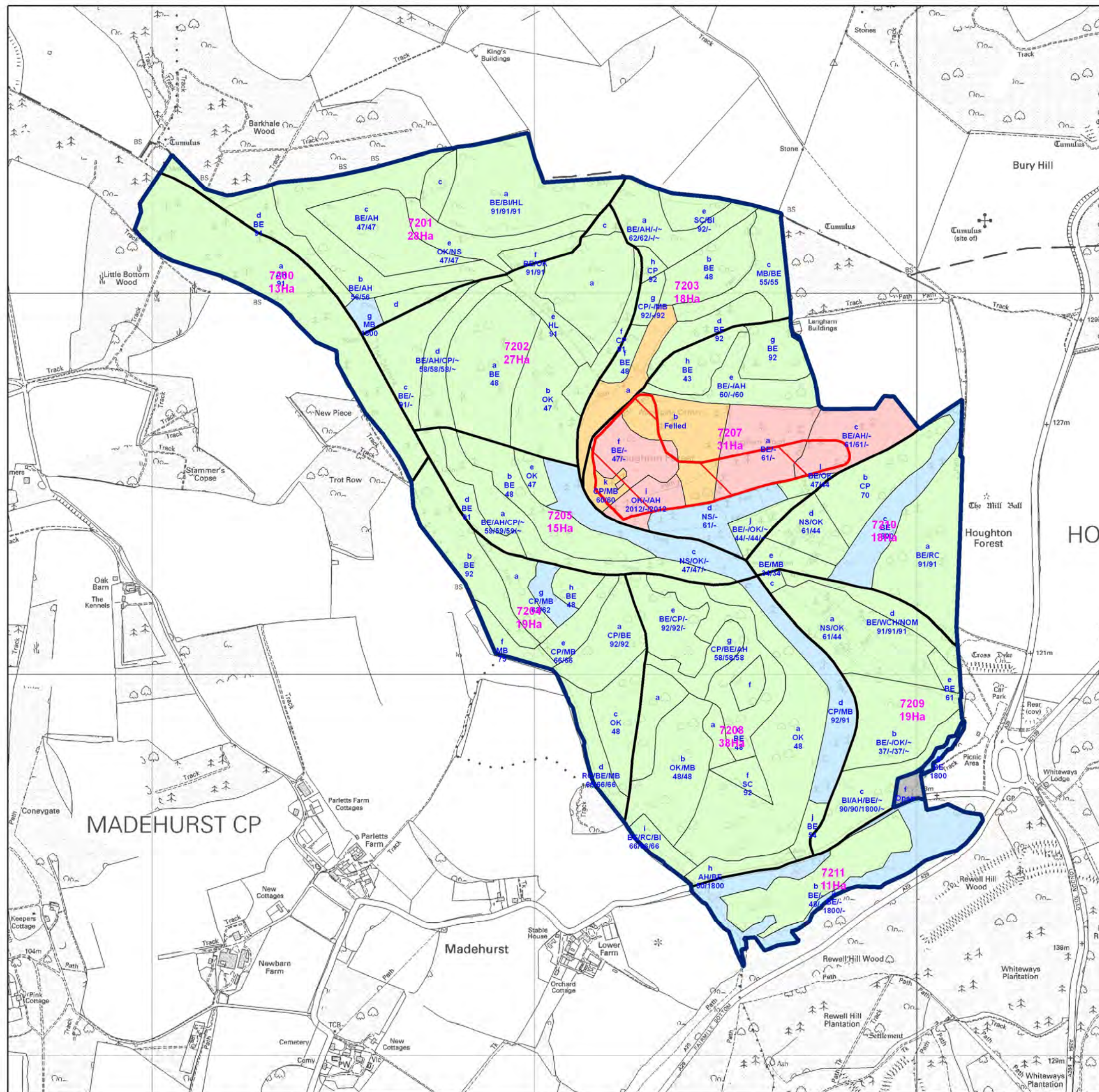
- 2012-2016
- 2017-2021
- 2022-2026
- 2027-2031
- 2032-2036
- 2037-2041
- Beyond 2042

- Open water
- Management area
- Compartments
- Sub-compartments
- Forest road
- Forest access tracks
- Watercourse

Produced by the Planning Team March 2013

This map is based upon Ordnance Survey material with the permission of Ordnance Survey on behalf of the Controller of Her Majesty's Stationary Office © Crown Copyright. Unauthorised reproduction infringes Crown Copyright and may lead to prosecution or civil proceedings. Forestry Commission, 100025498, 2013

1:10,000





Forestry Commission
England

South England FD South Downs 2 FDP (Houghton) Future Habitats Map

- Predominantly native woodland with a small element of non-native species (<20%). Small patches of open space support early successional vegetation during the establishment of young native trees.
- Mixed woodland with native trees regenerating amongst gradually replacing conifer woodland. Small patches of open space support successional vegetation during the establishment of young native trees.
- Pure and mixed woodland stocked with site and climate suitable species, usually through natural regeneration. Enrichment with site and climate suitable species where necessary to maintain woodland cover. Small patches of open space support successional vegetation during the establishment of successor trees.
- Pure and mixed woodland stocked with site and climate suitable species, either by replanting or through natural regeneration/enrichment.
- Old and long-term retention stands of any species, focusing on the maintenance of big trees in the landscape.
- Yew-dominated woodland.
- Sweet Chestnut coppice on a rotation providing cyclical open space with early successional vegetation during the re-growth phase of the stools.
- Open space.
- PAWS woodland within FC management boundary

- Open water
- Management area
- Compartments
- Sub-compartments
- Forest road
- Forest access tracks
- Watercourse

Produced by the Planning Team January 2013

This map is based upon Ordnance Survey material with the permission of Ordnance Survey on behalf of the Controller of Her Majesty's Stationary Office © Crown Copyright. Unauthorised reproduction infringes Crown Copyright and may lead to prosecution or civil proceedings. Forestry Commission, 100025498, 2013.



1:10,000

9. Summary of Proposals

Forestry Activity	Area (ha)			
	Conifer high forest	Broadleaf natural regeneration or replanting	Conifer natural regeneration or replanting	Open
Clearfell in period 2013-26	0	0	0	0
Clearfell in period 2027-43	9.1	4.0	4.1	1.0
Broadleaf regeneration felling in period 2013-26	0			
Broadleaf regeneration felling in period 2027-43	0			
Management of areas under Low Impact Silvicultural Systems (LISS)	2045.4			
Management of areas under a Coppice System	3.4			
Management of old stands or for long-term retention (included in LISS total above)	51.4			
Management of permanent open space	40.4			
TOTAL AREA	2098.3			

Signed
FOREST MANAGEMENT DIRECTOR

Date

Signed
REGIONAL DIRECTOR

Date

Date of commencement of the plan: 1 July 2013

Expiry Date: 30 June 2023

Review Date: 31 May 2018