


Forester




Forestry Commission  
NORTH WEST ENGLAND

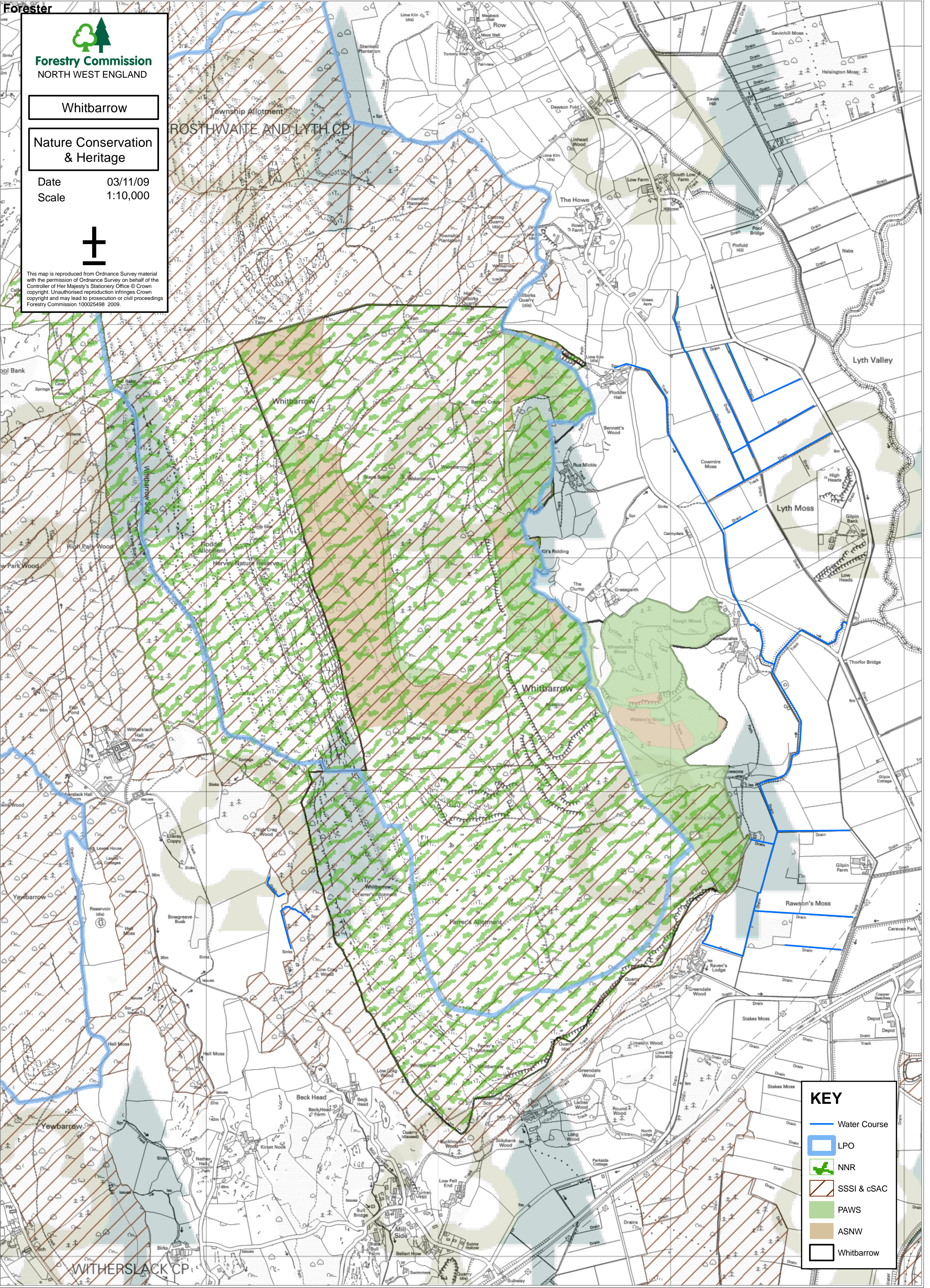
Whitbarrow

Nature Conservation  
& Heritage

Date03/11/09  
Scale1:10,000



This map is reproduced from Ordnance Survey material with the permission of Ordnance Survey on behalf of the Controller of Her Majesty's Stationery Office © Crown copyright. Unauthorised reproduction infringes Crown copyright and may lead to prosecution or civil proceedings Forestry Commission 100025498 2009.



KEY

 Water Course

 LPO

 NNR

 SSSI & cSAC

 PAWS

 ASNW

 Whitbarrow





Forestry Commission  
NORTH WEST ENGLAND

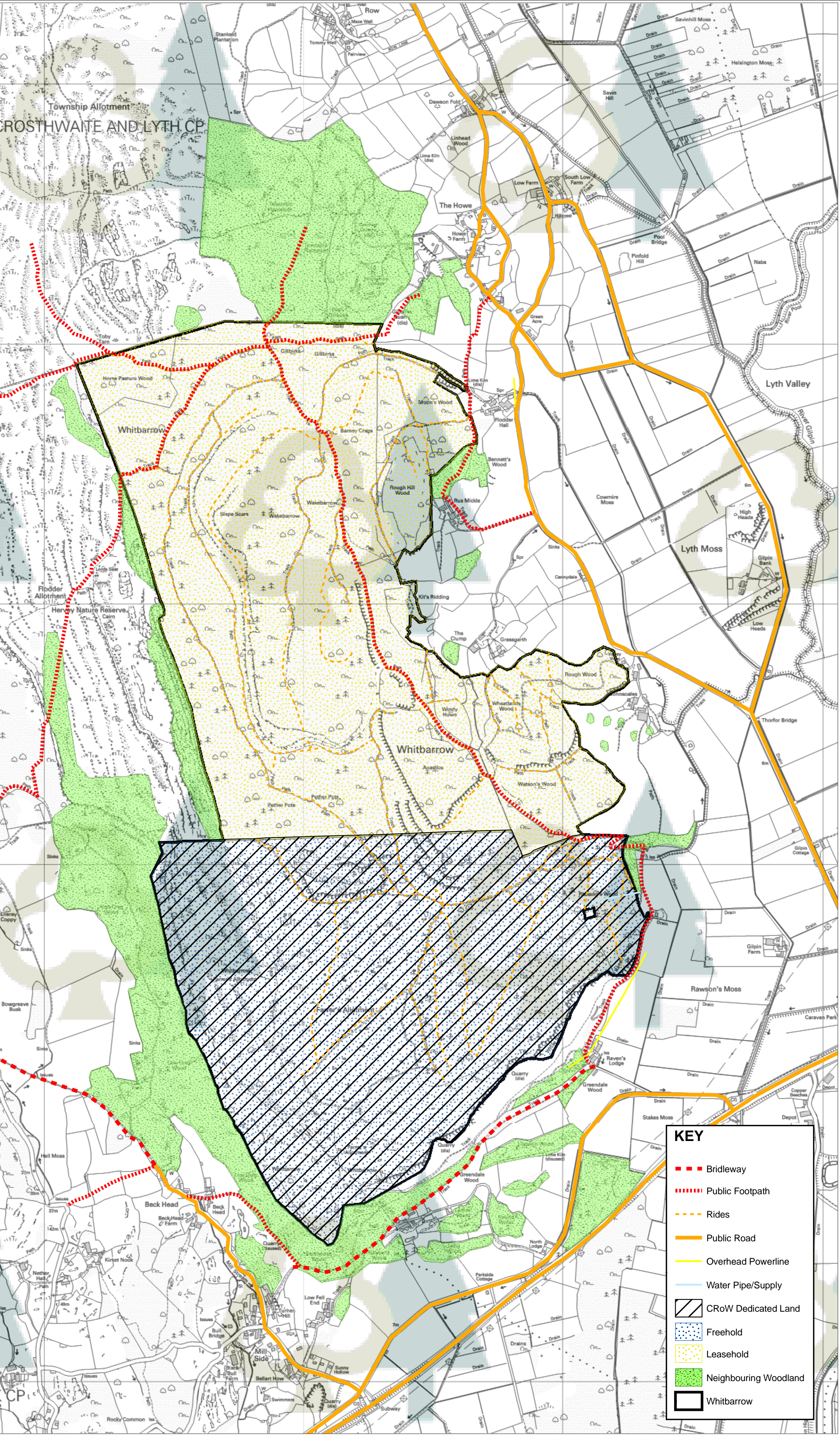
Whitbarrow

Recreation & Access

Date 03/11/09  
Scale 1:10,000



This map is reproduced from Ordnance Survey material with the permission of Ordnance Survey on behalf of the Controller of Her Majesty's Stationary Office © Crown copyright. Unauthorised reproduction infringes Crown copyright and may lead to prosecution or civil proceedings Forestry Commission 100025498 2009.



KEY

Bridleway

Public Footpath

Rides

Public Road

Overhead Powerline

Water Pipe/Supply

CRoW Dedicated Land

Freehold

Leasehold

Neighbouring Woodland

Whitbarrow



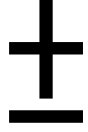


Forestry Commission  
NORTH WEST ENGLAND

Whitbarrow

Achievements over  
the last 10 years

Date 05/11/09  
Scale 1:10,000



This map is reproduced from Ordnance Survey material with the permission of Ordnance Survey on behalf of the Controller of Her Majesty's Stationary Office © Crown copyright. Unauthorised reproduction infringes Crown copyright and may lead to prosecution or civil proceedings Forestry Commission 100025498 2009.

10.5 ha of corsican pine plantation felled and removed. Branch wood collected and removed. Grazing with cattle introduced to improve condition of calcareous grassland.

Work well advanced to remove red cedar and beech from mixture with native tree species.

Plantation of douglas fir and hybrid larch felled.

Plantation was dominated by beech. Heavy thinning and small group felling is allowing re-establishment of native tree species.

Most non-native species have been removed from mixture with locally native woodland.

Research plot of eucalyptus blew over and all but one tree felled and removed.

Log Barn constructed utilising timber from Whitbarrow and Marble Quarry. Built to support grazing on Farrer's Allotment.

Restoration of hazel coppice underway.

Old plantation boundary fence dismantled and removed from site.

Additional land purchased with help from European LIFE co-funded project. Grazing with cattle introduced.

Drystone wall repaired and gates replaced to make boundary stock proof.

Red cedar and beech removed by thinning from mixture with native tree species.

Over 80 hectares of plantation felled, including pine, larch, cedar and beech. Approximately 60-70% of branch wood gathered and removed from site. Grazing with cattle introduced to improve condition of calcareous grassland. Freehold aquired.