



Forestry Commission
NORTH WEST ENGLAND

Whitbarrow

Review Issues &
Design Concept

Date 05/11/09
Scale 1:10,000



This map is reproduced from Ordnance Survey material with the permission of Ordnance Survey on behalf of the Controller of Her Majesty's Stationary Office © Crown copyright. Unauthorised reproduction infringes Crown copyright and may lead to prosecution or civil proceedings Forestry Commission 100025498 2009.

STHWAITE AND LYTH CP



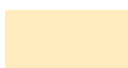
Former plantation now being grazed to promote restoration of calcareous grassland. Maintain scatter of individual and small groups of trees and shrubs.



Maintain/create open wildlife corridors by ride widening and/or coppicing. Especially beneficial to butterflies.



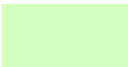
Ongoing removal of non-native trees from mixture with ash/hazel woodlands.



Area is outwith SSSI boundary. Continue promotion of ash/hazel woodland through the progressive removal of beech and sycamore.



Naturalised scots pine forms important landscape feature. Retain where potential for damaging limestone pavement is low.



Former plantation which is now predominantly grassland. Encourage establishment of groups and individual native trees and shrubs.



Calcareous grassland and heath with wide distribution of native trees and shrubs. To be model for adjacent former plantation.

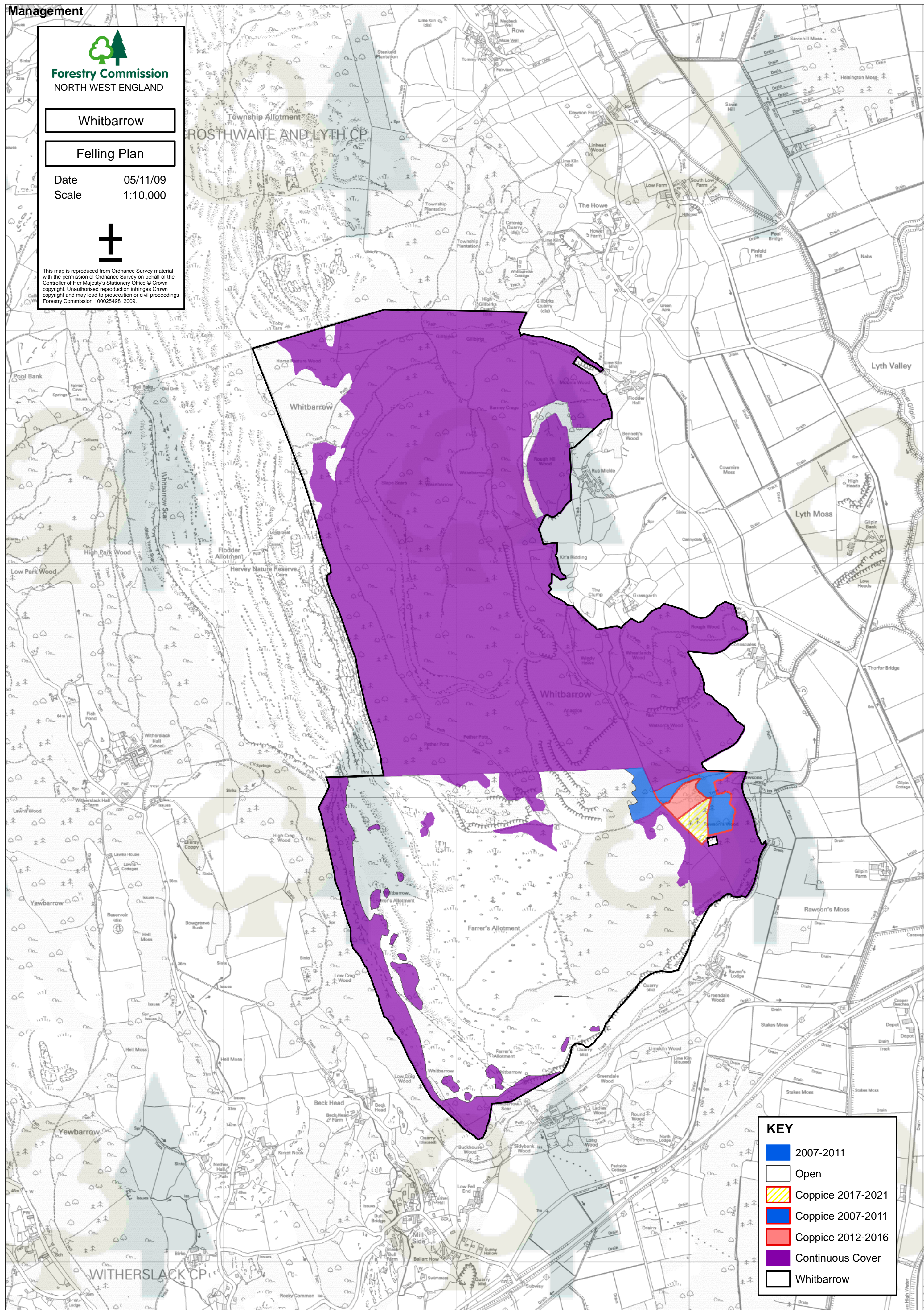
WITHERSLACK CP

Whitbarrow

Date 05/11/09
Scale 1:10,000



This map is reproduced from Ordnance Survey material with the permission of Ordnance Survey on behalf of the Controller of Her Majesty's Stationery Office © Crown copyright. Unauthorised reproduction infringes Crown copyright and may lead to prosecution or civil proceedings Forestry Commission 100025498 2009.





Forestry Commission
NORTH WEST ENGLAND

Whitbarrow

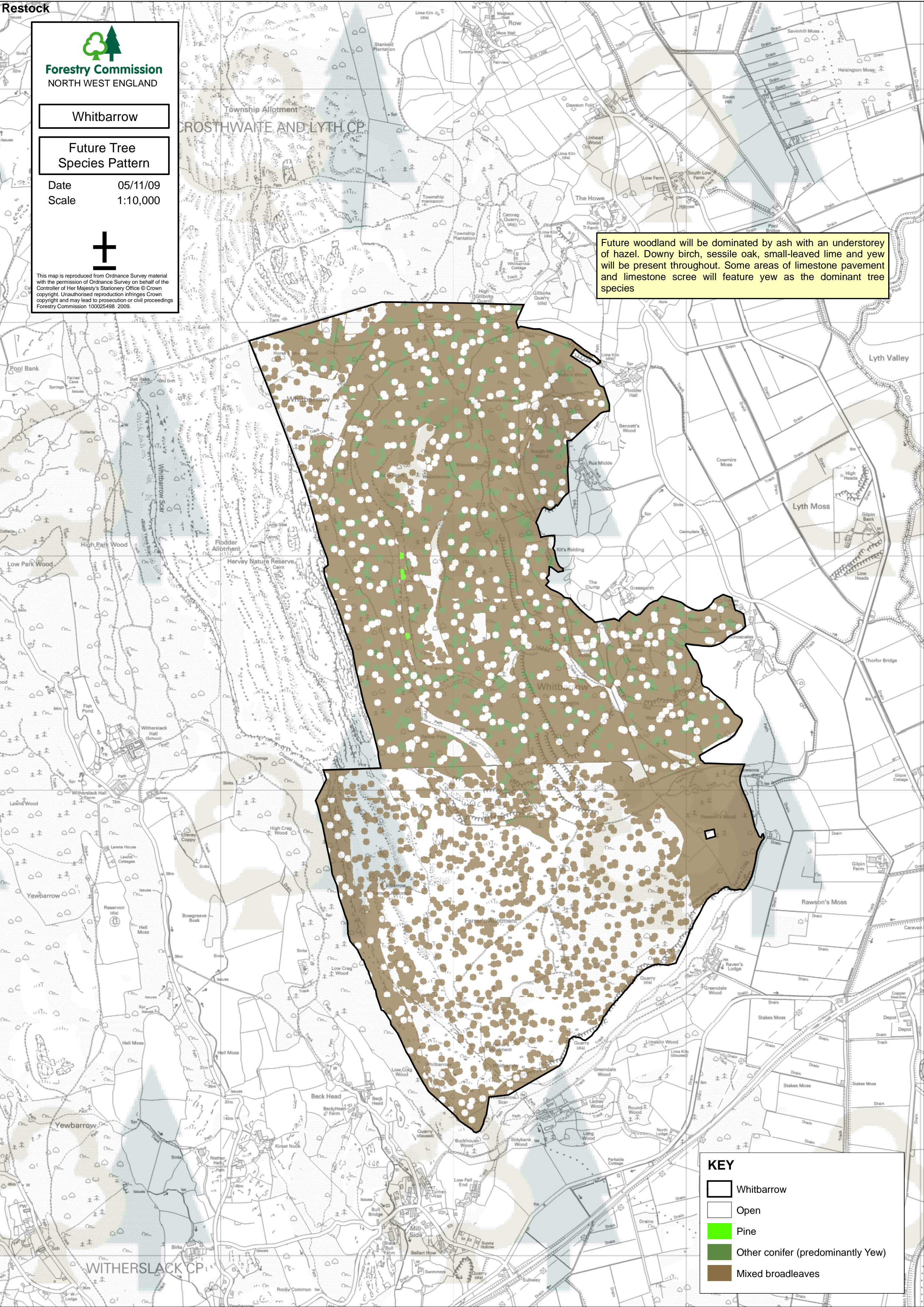
Future Tree
Species Pattern

Date 05/11/09
Scale 1:10,000



This map is reproduced from Ordnance Survey material with the permission of Ordnance Survey on behalf of the Controller of Her Majesty's Stationery Office © Crown copyright. Unauthorised reproduction infringes Crown copyright and may lead to prosecution or civil proceedings Forestry Commission 100025498 2009.

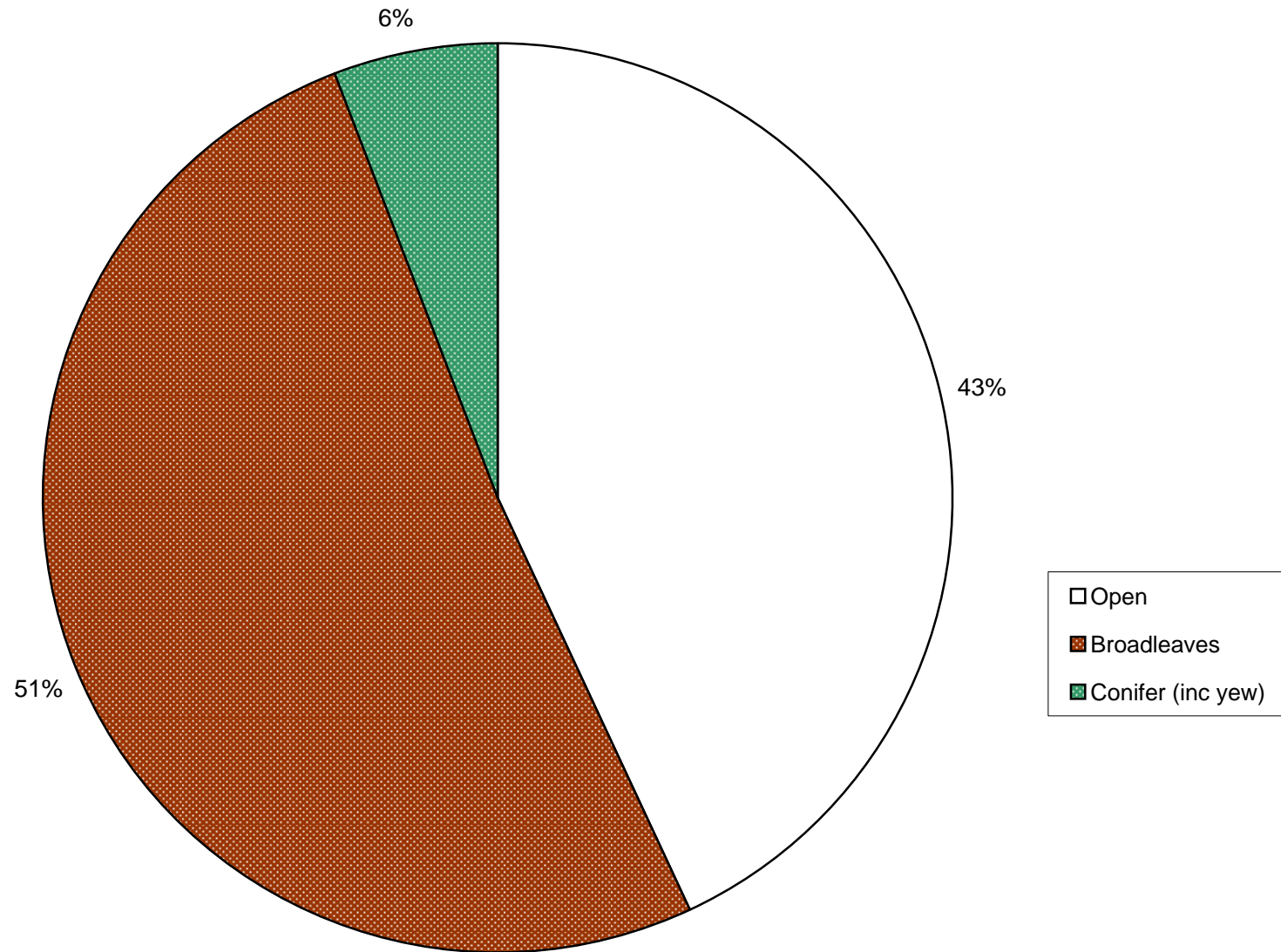
Future woodland will be dominated by ash with an understorey of hazel. Downy birch, sessile oak, small-leaved lime and yew will be present throughout. Some areas of limestone pavement and limestone scree will feature yew as the dominant tree species



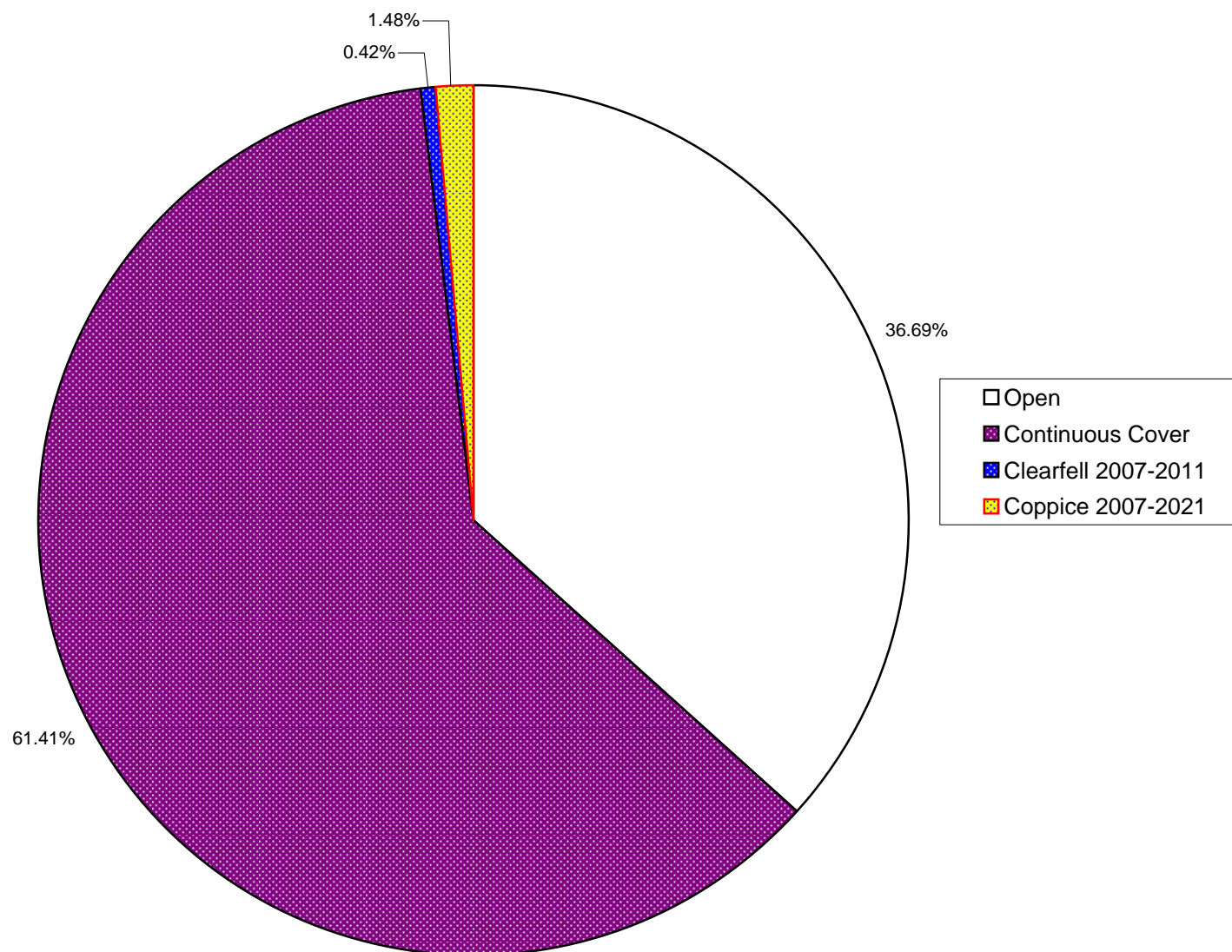
KEY

- Whitbarrow
- Open
- Pine
- Other conifer (predominantly Yew)
- Mixed broadleaves

**CURRENT SPECIES COMPOSITION
WHITBARROW FDP 2009**



**PROPOSED FELLING YEARS
WHITBARROW FDP 2009**



**PPROPOSED SPECIES COMPOSITION
WHITBARROW FDP 2009**

